

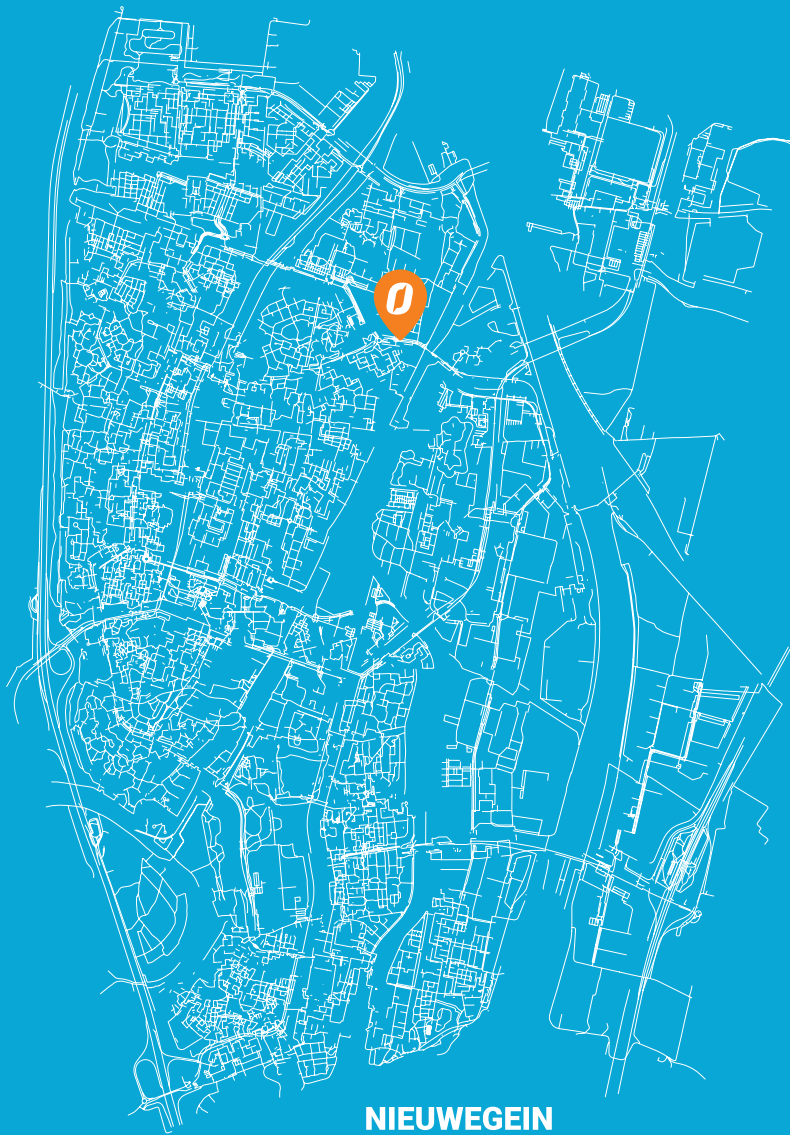
ION INDUSTRIES

PRODUCT CATALOGUE 2024



WWW.IONINDUSTRIES.COM

“MORE THAN JUST A DIMMER”



About us

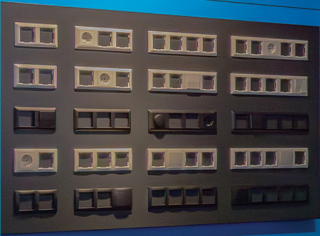
ION INDUSTRIES is the specialist in LED Dimmers and cover materials. As a manufacturer, developer and distributor operating from Nieuwegein, ION INDUSTRIES supplies the corporate and private markets in Europe with smart, innovative and high-quality LED Dimmers.

Our quality standards

By staying in touch with all target groups in the market, we know where needs and opportunities lie. This makes it possible to implement developments that meet these needs and thus make our contribution to the smartest, most innovative and most sustainable solutions. The result: always being able to supply the best and most complete high-quality LED Dimmers (both new and improved existing models) + cover materials.

ION INDUSTRIES

SCHAKELMATERIAAL



ION INDUSTRIES
"MORE THAN JUST A DIMMER"



WWW.ION-INDUSTRIES.COM



**GERMAN
INNO
VATION
AWARD '20
WINNER**

WINNER



**GERMAN
INNO
VATION
AWARD '21
GOLD**

GOLD



**GERMAN
INNO
VATION
AWARD '22
WINNER**

WINNER



**GERMAN
INNO
VATION
AWARD '23
SPECIAL**

SPECIAL



**GERMAN
INNO
VATION
AWARD '24
NOMINEE**

NOMINEE

Leader in innovation

It is therefore that ION INDUSTRIES has already won several awards at the German Innovation Awards and that our products are currently available at more than 500 different sales outlets in Europe.



Click on the **Quick finder** icon
to go back to the product range page.

Product range¹

0 LED Dimmers

- 08 [LED Dimmer 150 Watt](#)
- 09 [LED Dimmer 200 Watt](#)
- 10 [LED Dimmer 250 Watt Pro*](#)
- 11 [LED Dimmer 350 Watt](#)
- 12 [LED Dimmer 600 Watt](#)
- 13 [LED Duo Dimmer 2x200 Watt](#)
- 14 [LED Duo Touch Dimmer 2x150 Watt](#)
- 15 [LED Touch Dimmer 200 Watt](#)
- 16 [LED Touch Dimmer Expansion Unit](#)
- 17 [LED Matter Dimmer 200 Watt](#)
- 18 [LED Zigbee Dimmer 200 Watt](#)
- 19 [LED Zigbee Touch Dimmer 200 Watt](#)
- 20 [LED WiFi Dimmer 200 Watt](#)
- 22 [Master-Slave LED Dimmer SET 200 Watt](#)
- 24 [Slave LED Dimmer](#)
- 25 [LED Cable Dimmer White 75 Watt](#)
- 26 [LED Cable Dimmer Black 75 Watt](#)
- 26 [LED Floor Dimmer White 75 Watt](#)
- 27 [LED Floor Dimmer Black 75 Watt](#)
- 27 [LED Dim Module 200 Watt](#)
- 28 [LED Controller 1-10 Volt](#)
- 29 [12 Volt LED Driver 50 Watt Dimmable](#)
- 30 [Connection box Charger USB A + USB C](#)

0 Switches

- 32 [Two-way switch](#)
- 33 [Two-gang switch](#)
- 34 [Circuit breaker, 2-pole](#)
- 35 [Intermediate switch](#)
- 36 [Two-way switch, two-gang](#)
- 37 [Rocker button, no contact, 1-pole](#)
- 38 [Rocker button, no contact, two-gang, 1-pole](#)
- 39 [Three-stage switch insert with Zero setting](#)
- 40 [Blind rocker](#)

0 V1, J1- Serie | Alpine White

- 42 [V1 Frames 1 to 5 gang](#)
- 43 [J1 Frames 1 to 5 gang](#)
- 44 [Rockers](#)
- 45 [Cover plate](#)
- 45 [Touch Dimmer Buttons](#)
- 45 [Blind plates](#)
- 46 [Wall sockets](#)
- 46 [Modular Jacks](#)

0 V1, J1- Serie | Matt Alpine White

- 48 [V1 Frames 1 to 5 gang](#)
- 49 [J1 Frames 1 to 5 gang](#)
- 50 [Rockers](#)
- 51 [Cover plate](#)
- 51 [Touch Dimmer Buttons](#)
- 51 [Blind plates](#)
- 52 [Wall sockets](#)
- 52 [Modular Jacks](#)



Click on the **Quick finder** icon
to go back to the product range page.

Product range²

V1, J1- Serie | Matt Black

- 54 [V1 Frames 1 to 5 gang](#)
- 55 [J1 Frames 1 to 5 gang](#)
- 56 [Rockers](#)
- 57 [Cover plate](#)
- 57 [Touch Dimmer Buttons](#)
- 57 [Blind plates](#)
- 58 [Wall sockets](#)
- 58 [Modular Jacks](#)

- 59 **V1, J1 – Series** | Additional
- [Cover plates \(Set\)](#)
 - [Cover frame 2-gang](#)
 - [Touch Dimmer Buttons](#)
 - [Cover frame single-gang](#)

E1- Serie | Alpine White

- 62 [E1 Frames 1 to 5 gang](#)
- 63 [Rockers](#)
- 64 [Cover plate](#)
- 64 [Blind plates](#)
- 64 [Wall sockets](#)
- 64 [Modular Jacks](#)

E1- Serie | Matt Alpine White

- 66 [E1 Frames 1 to 5 gang](#)
- 67 [Rockers](#)
- 68 [Cover plate](#)
- 68 [Blind plates](#)
- 68 [Wall sockets](#)
- 68 [Modular Jacks](#)

E1- Serie | Matt Black

- 70 [E1 Frames 1 to 5 gang](#)
- 71 [Rockers](#)
- 72 [Cover plate](#)
- 72 [Blind plates](#)
- 72 [Wall sockets](#)
- 72 [Modular Jacks](#)

Surface-mounted IP55

- 74 [Surface-mounted IP55 | Grey](#)
- 75 [Surface-mounted IP55 | Black](#)

Additional Switching Material

- 78 [Wall socket Half-Mounted 2-gang RA
USB A + USB C Alpin White & Matt Black](#)
- 78 [Wall socket Half-Mounted 2-gang RA
Alpin White & Matt Black](#)
- 78 [Connector Coax – TV](#)
- 78 [Connector UTP – Cat6](#)
- 78 [LED Dimming Stabilizer](#)



LED DIMMERS

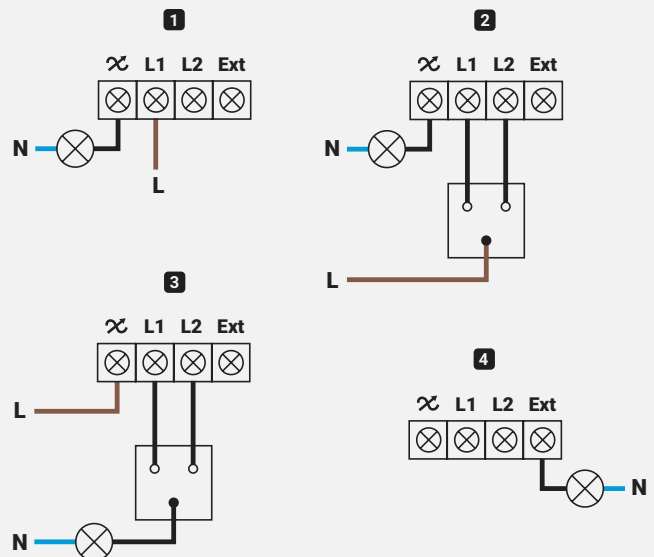
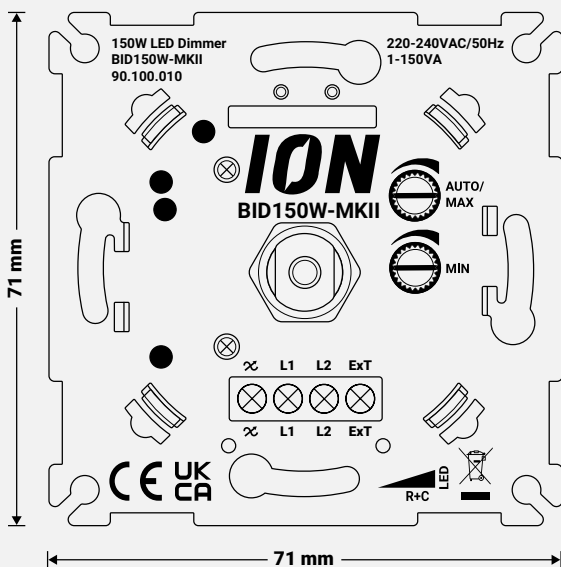
ION INDUSTRIES offers a wide selection of LED Dimmers! In our range you will find single dimmers, duo dimmers, smart dimmers, touch dimmers, dimming modules, floor/cable dimmers and more.



LED Dimmer 150 Watt

Product Code: 90.100.010

- Dimming range 0,3 – 150 Watt
- Min/Max brightness manually and automatically adjustable
- Additional output of 600 Watt to operate an extra switching function
- Possible to use as two-way switch in combination with switch
- No neutral wire required
- Memory function

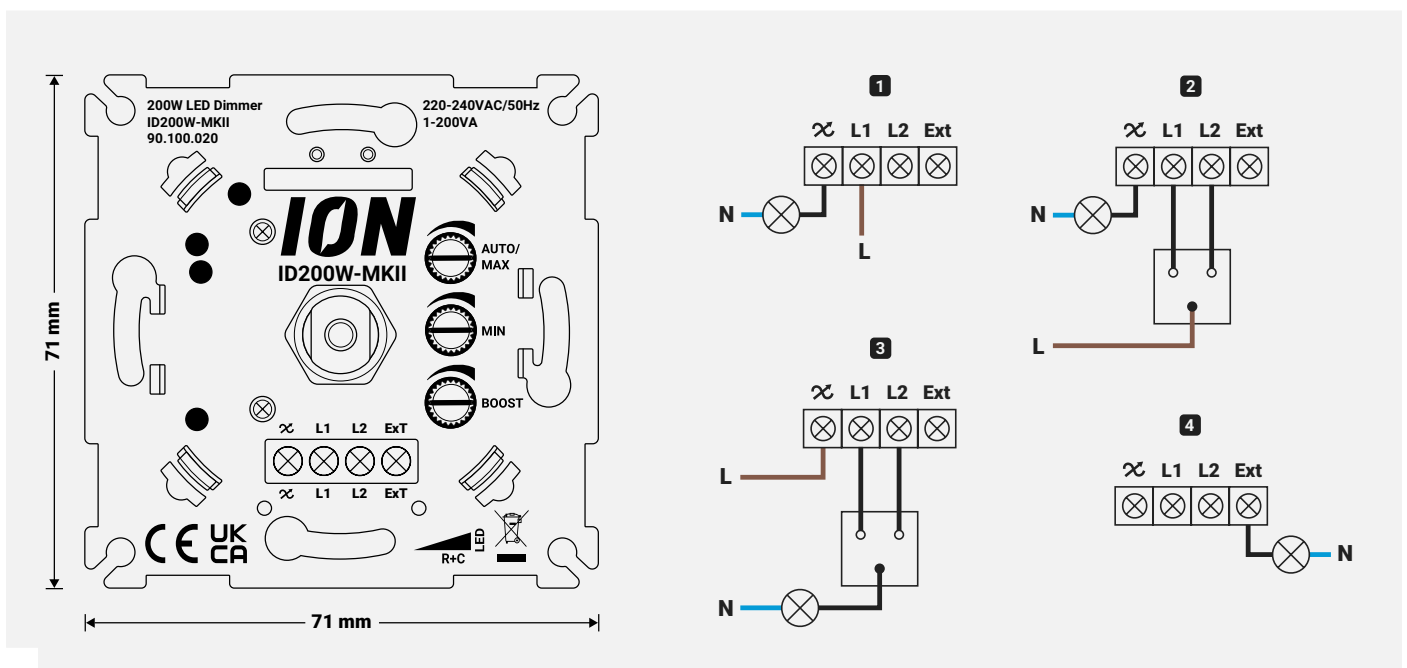




LED Dimmer 200 Watt

Product Code: 90.100.020

- Dimming range 0,3 – 200 Watt
- Min/Max brightness manually and automatically adjustable
- Additional output of 600 Watt to operate an extra switching function
- Possible to use as two-way switch in combination with switch
- Boost function to create slow start
- No neutral wire required
- Memory function



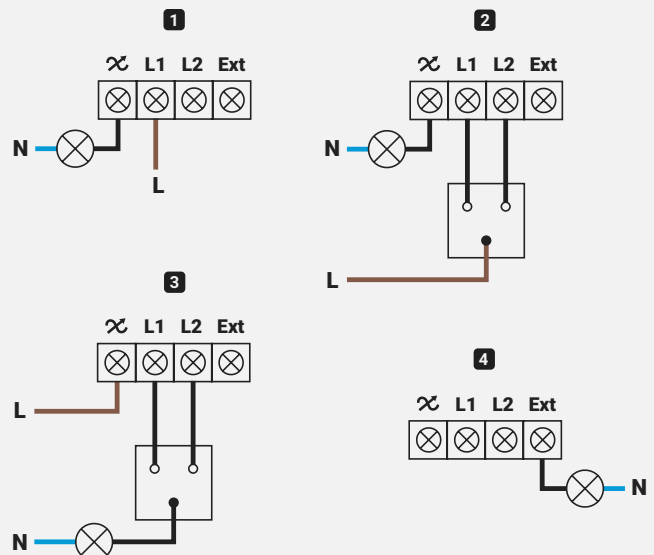
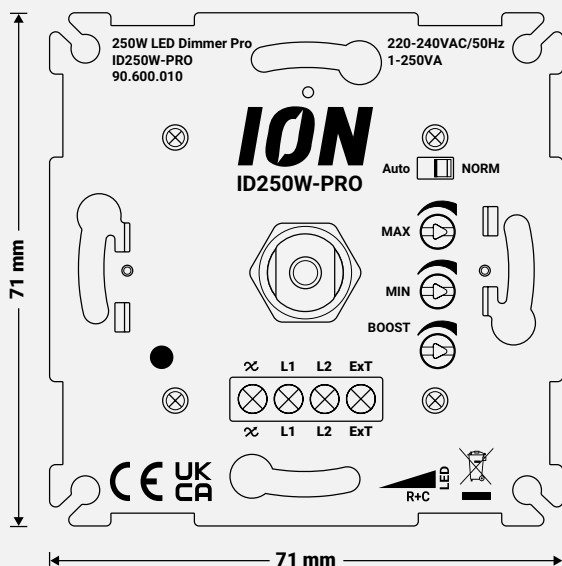


Order conditions apply

LED Dimmer 250 Watt Pro*

Product Code: 90.600.010

- Dimming range 0,3 – 250 Watt
- Min/Max brightness manually and automatically adjustable
- Additional output of 600 Watt to operate an extra switching function
- Possible to use as two-way switch in combination with switch
- Boost function to create slow start
- No neutral wire required
- Memory function

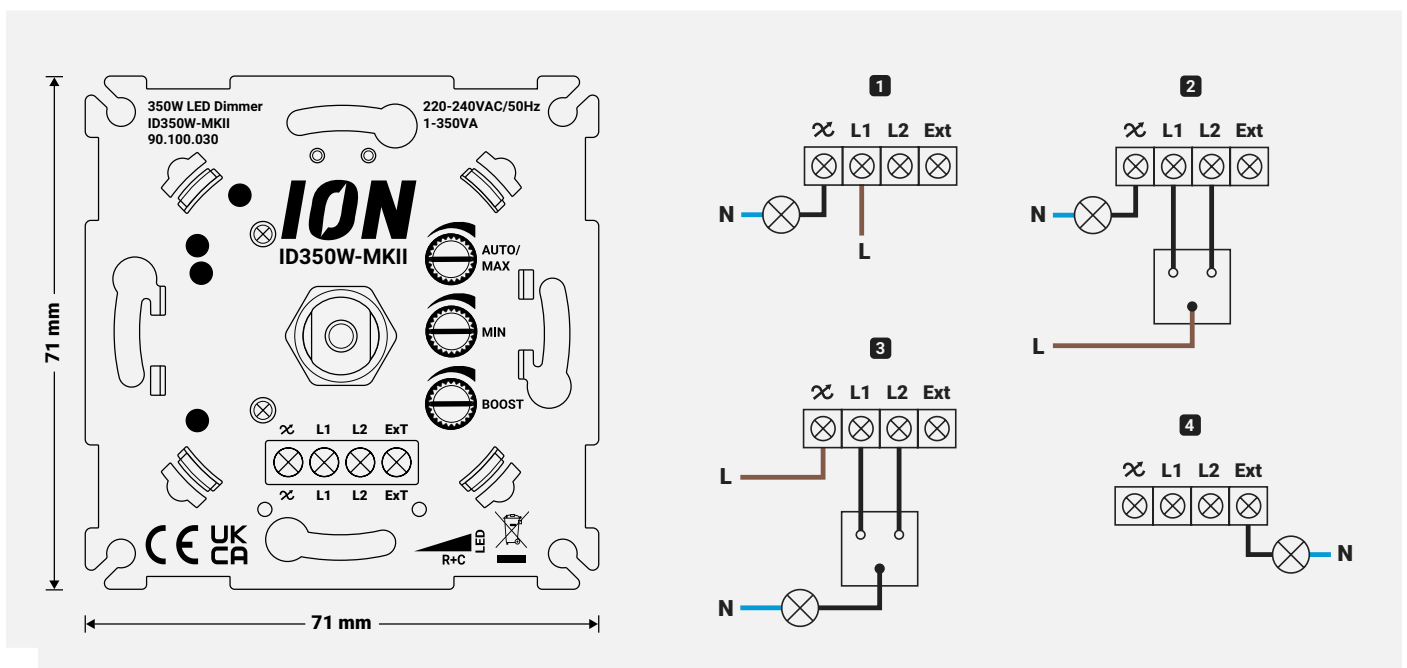




LED Dimmer 350 Watt

Product Code: 90.100.030

- Dimming range 0,3 – 350 Watt
- Min/Max brightness manually and automatically adjustable
- Additional output of 600 Watt to operate an extra switching function
- Possible to use as two-way switch in combination with switch
- Boost function to create slow start
- No neutral wire required
- Memory function

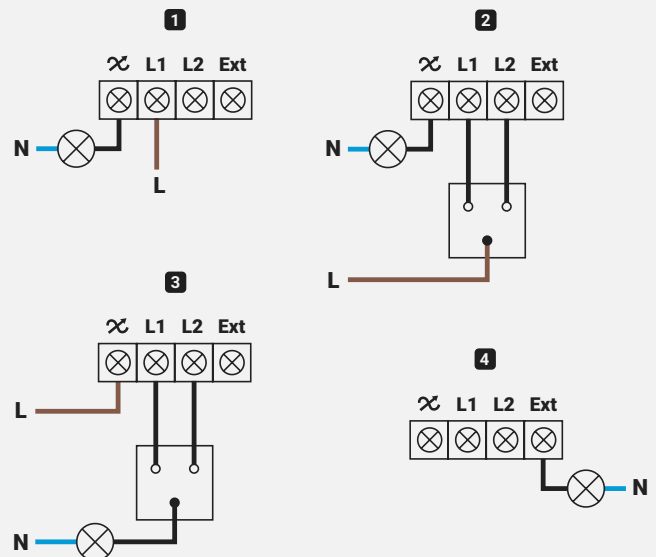
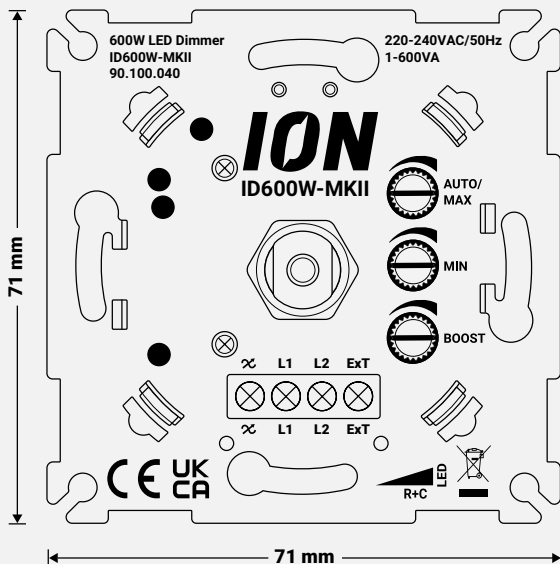




LED Dimmer 600 Watt

Product Code: 90.100.040

- Dimming range 0,3 – 600 Watt
- Min/Max brightness manually and automatically adjustable
- Additional output of 600 Watt to operate an extra switching function
- Possible to use as two-way switch in combination with switch
- Boost function to create slow start
- No neutral wire required
- Memory function

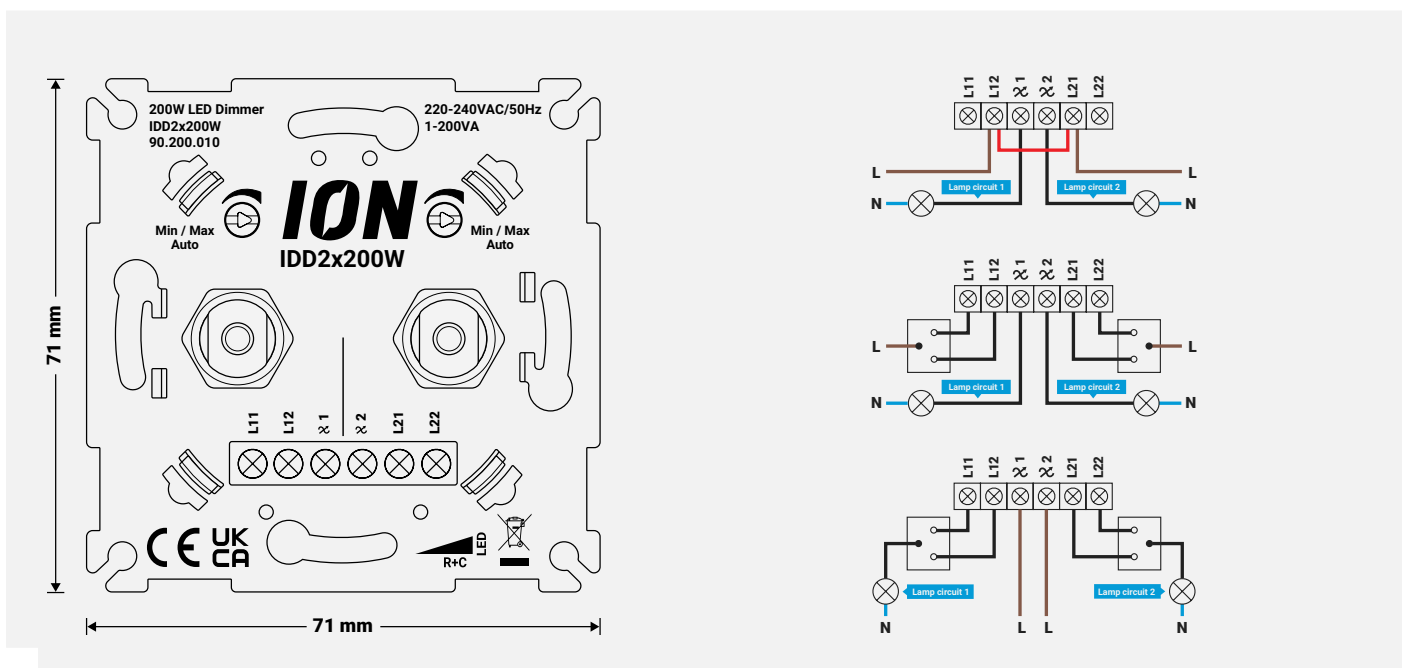


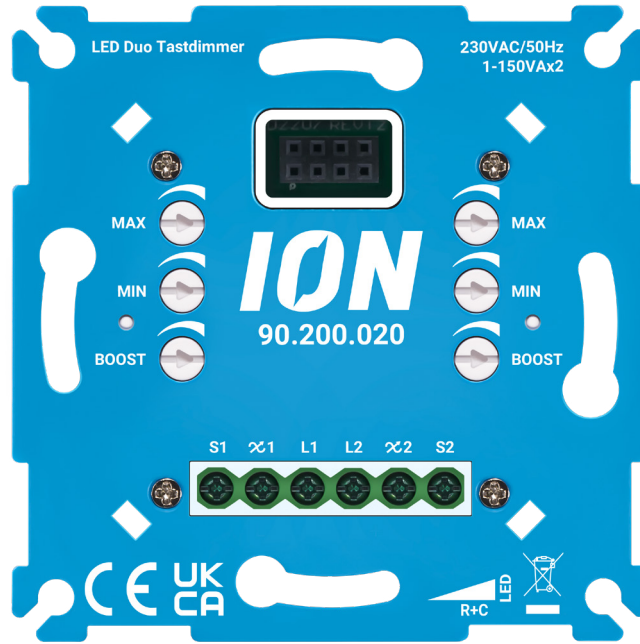


LED Duo Dimmer 2x200 Watt

Product Code: 90.200.010

- Dimming range 2 x 0,3 – 200 Watt
- Min/Max brightness manually and automatically adjustable
- Possible to use as two-way switch in combination with switch
- Switching two circuits with one wall switch
- No neutral wire required
- Memory feature

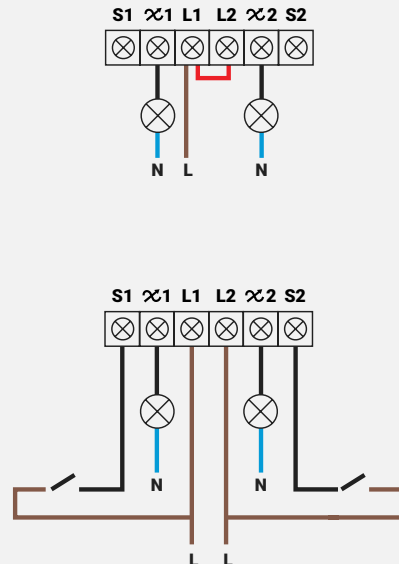
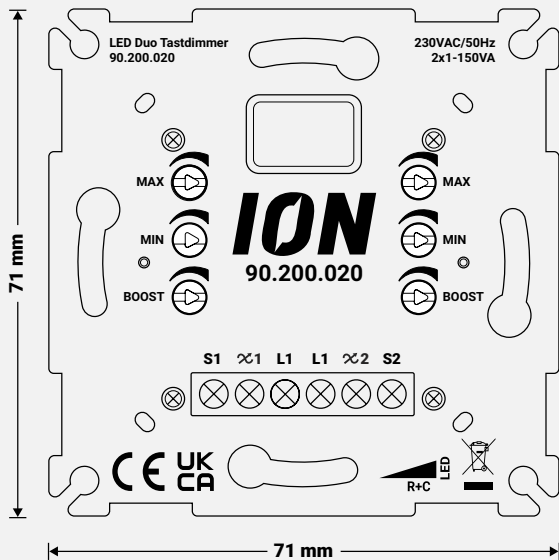




LED Duo Touch Dimmer 2x150 Watt

Product Code: 90.200.020

- Dimming range 2x 0,3 – 150 Watt
- Min/Max brightness manually adjustable
- Switching two groups with one wall switch
- Compatible with five Expansion Units by ION INDUSTRIES
- Only compatible with ION Touch Dimmer Buttons
- No neutral wire required
- Touch control
- Memory function

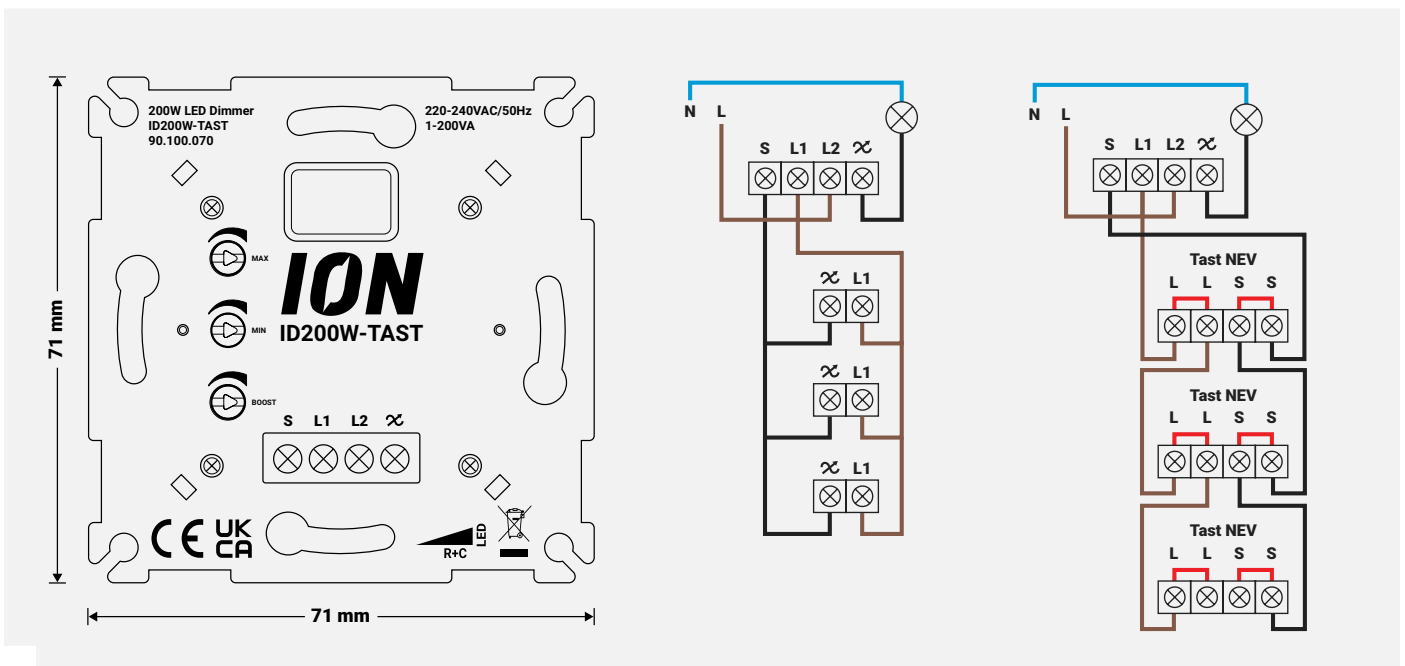




LED Touch Dimmer 200 Watt

Product Code: 90.100.070

- Dimming range 0,3 – 200 Watt
- Min/Max brightness manually adjustable
- Boost function to create slow start
- Compatible with five Expansion Units by ION INDUSTRIES
- No neutral wire required
- Only usable in combination with ION Touch Dimmer Buttons
- Two-way switch/dimmable parallel
- Touch control
- Memory function

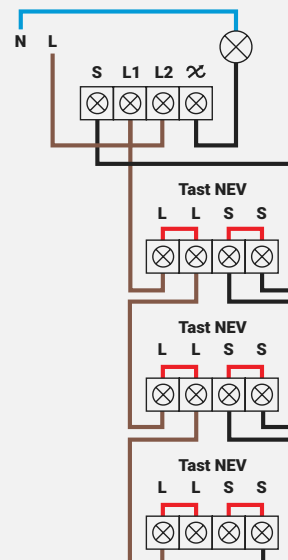
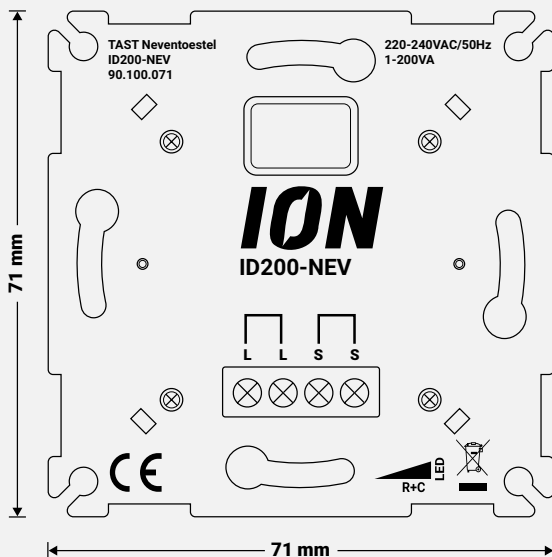




LED Touch Dimmer Expansion Unit

Product Code: 90.100.071

- Touch control
- No neutral wire required
- Can only be used with ION INDUSTRIES' LED Touch Dimmer
- No settings required, functions according to settings LED Touch Dimmer
- Only usable in combination with ION Touch Dimmer Buttons
- Compatible with five Expansion Units by ION INDUSTRIES
- Two-way switch/dimmable parallel
- Memory function





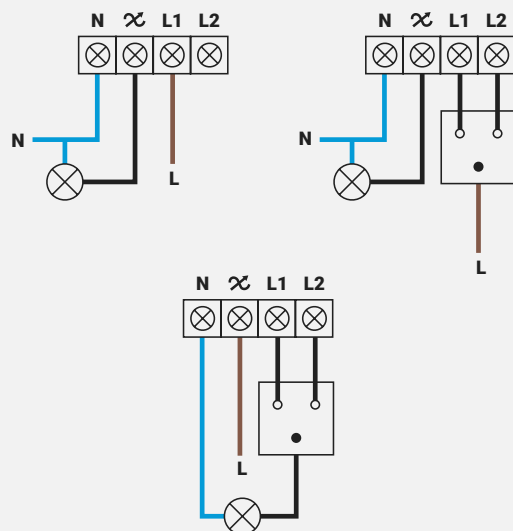
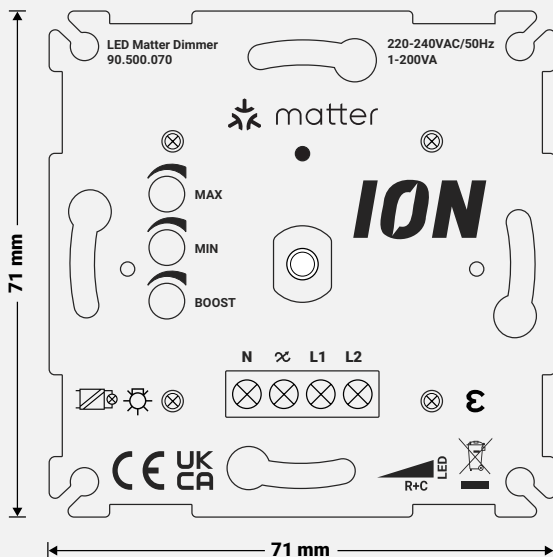
Available soon

Officially registered with matter

LED Matter Dimmer 200 Watt

Product Code: 90.500.070

- Dimming range 0,3 – 200 Watt
- Operates on Matter
- Press rotary button
- Boost function to create slow start
- Min/Max brightness adjustable with dimmer and application
- Possible to use as two-way switch in combination with switch
- No neutral wire required (though recommended)
- Memory function





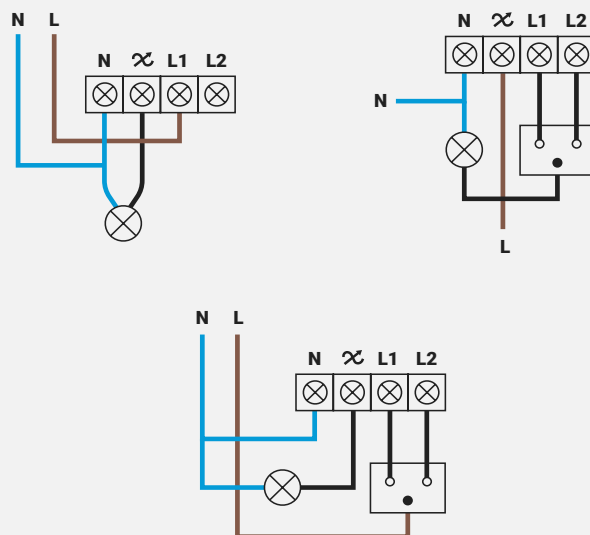
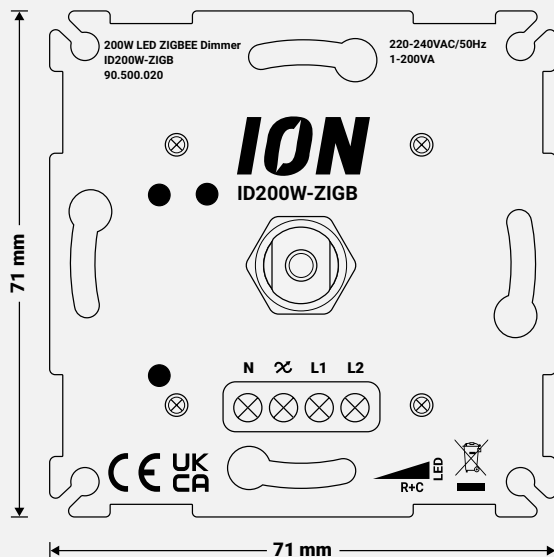
Homey



LED Zigbee Dimmer 200 Watt

Product Code: 90.500.020

- Dimming range 0,3 – 200 Watt
- Boost function to create slow start
- No neutral wire required (though recommended)
- Controllable with online application and physical button
- Min/Max brightness adjustable with dimmer and application
- Memory Function

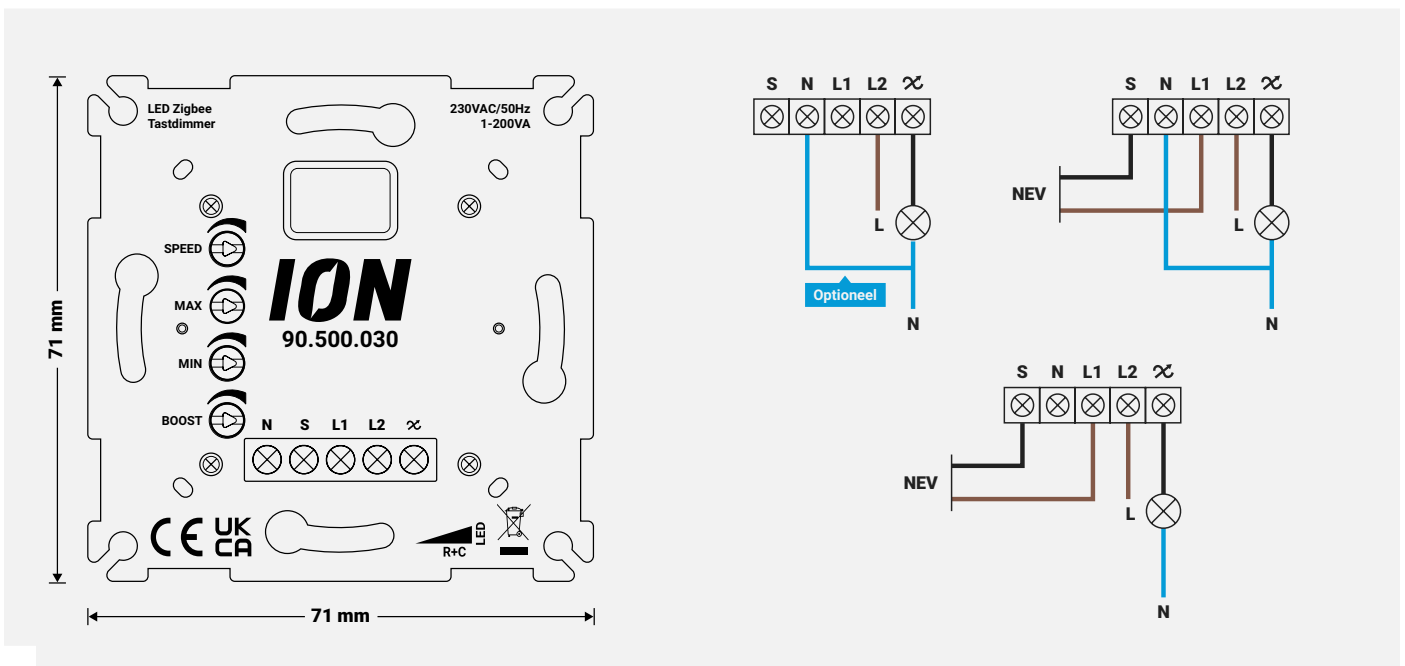




LED Zigbee Touch Dimmer 200 Watt

Product Code: 90.500.030

- Dimming range 0,3 – 200 Watt
- Boost function to create slow start
- No neutral wire required (though recommended)
- Compatible with five Expansion Units by ION INDUSTRIES
- Min/Max brightness adjustable with dimmer and application
- Possible to use as two-way switch in combination with switch
- Only usable in combination with ION Touch Dimmer Buttons
- Memory function



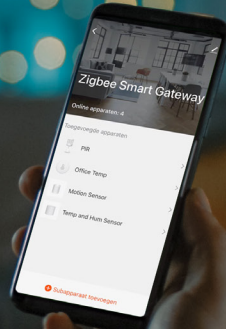


Gateway

A *Gateway*, also called Hub or Bridge, is a link between the LED Zigbee Dimmer, the application and the light.

The gateway sends commands to the dimmer, receives signals from the dimmer and can digitally control dimmers by using an app.

Without a gateway that is compatible with Zigbee, the LED Zigbee Dimmer cannot be controlled with an app or Smart Home System.



Zigbee Compatible Gateways



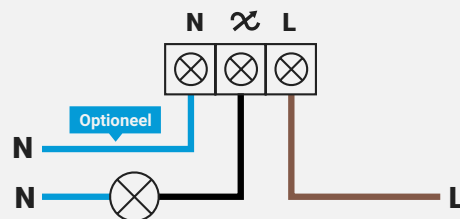
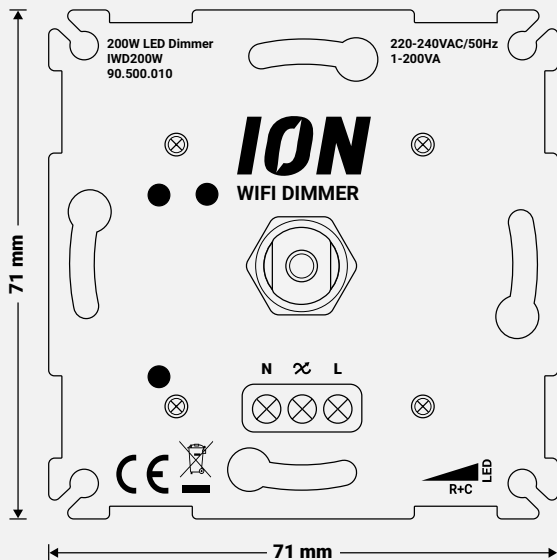
Homey



LED WiFi Dimmer 200 Watt

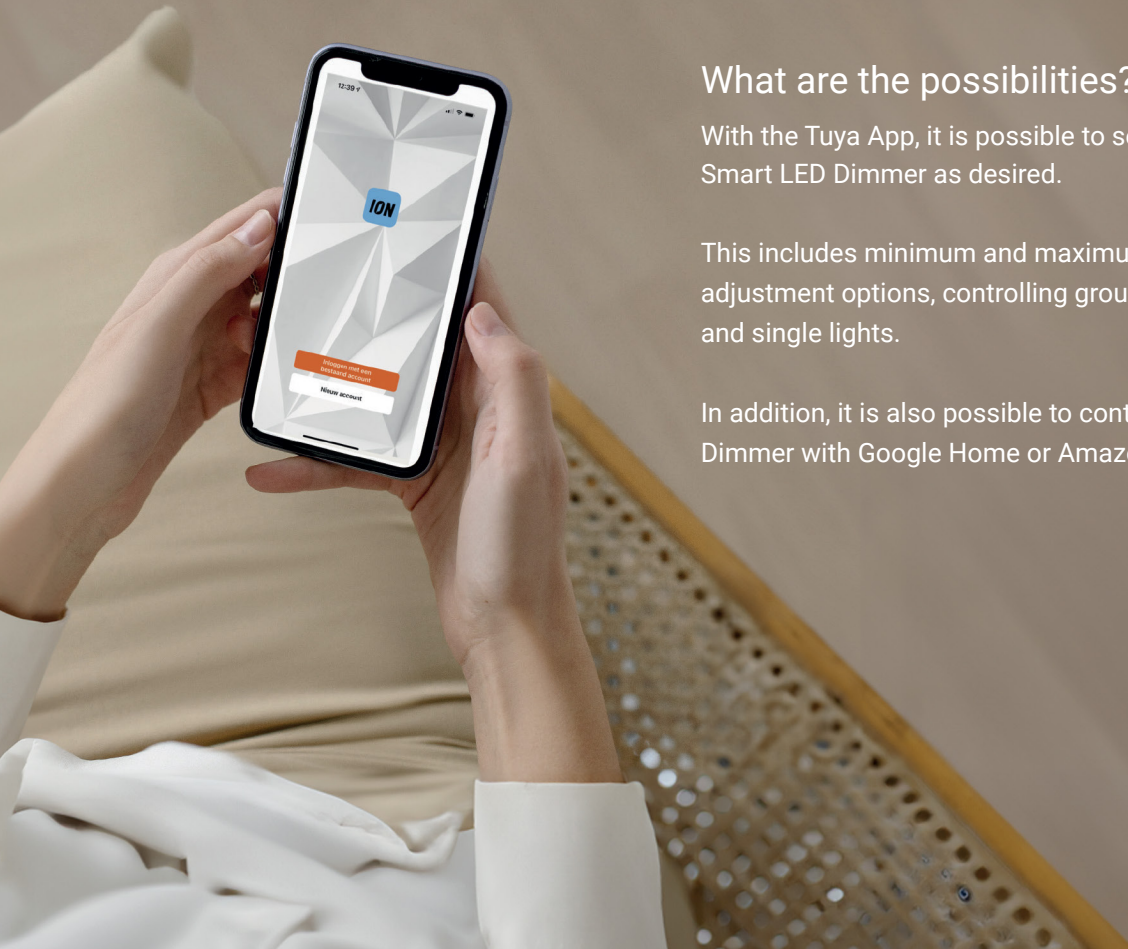
Product Code: 90.500.010

- Dimming range 0,3 – 200 Watt
- Possibility of switching single and multiple circuits of lights
- Controllable with online application and physical button
- No neutral wire required (though recommended)
- Memory function





SMART APPLICATION



What are the possibilities?

With the Tuya App, it is possible to set the Smart LED Dimmer as desired.

This includes minimum and maximum adjustment options, controlling groups and single lights.

In addition, it is also possible to control the LED Dimmer with Google Home or Amazon Alexa.

ION INDUSTRIES' **Smart LED Dimmers** are the perfect addition to your Smart Home! With these LED Dimmers, you can switch lights both manually (using the push-button) and digitally.

It is therefore no surprise that the **LED WiFi Dimmer** was awarded the first prize from the German Innovation Awards 2021. Both the LED WiFi Dimmer and the LED Zigbee Dimmer operate through the **Tuya Smart Application**.

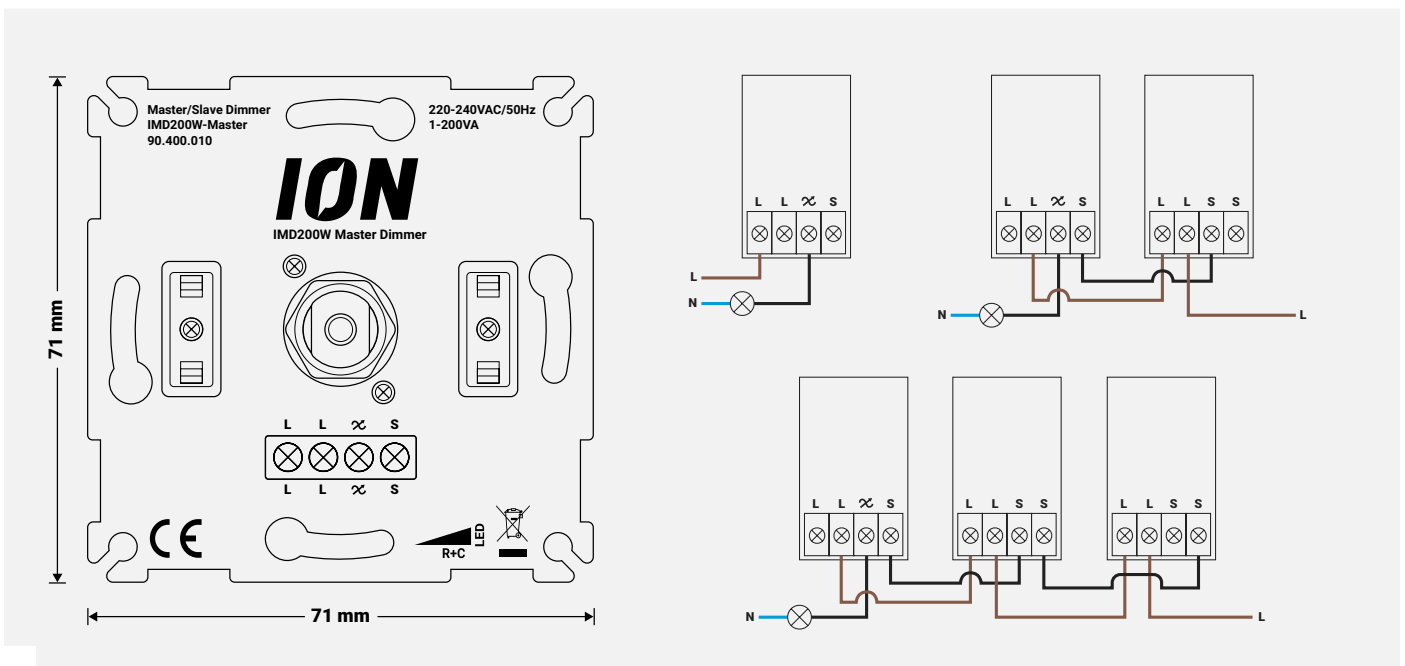




Master-Slave LED Dimmer SET 200 Watt

Product Code: 90.400.030

- Dimming range 0,3 – 200 Watt
- Min/Max brightness adjustable
- Boost function to create slow start
- Compatible with five Slave LED Dimmers from ION INDUSTRIES
- To use in two-way and intermediate circuits
- No neutral wire required
- Memory function

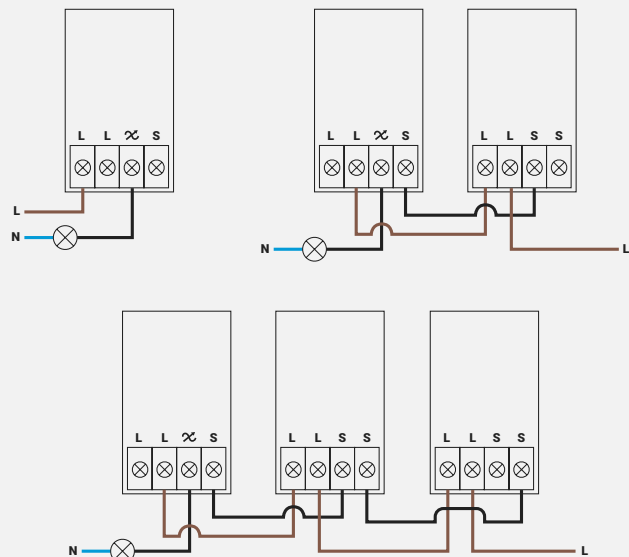
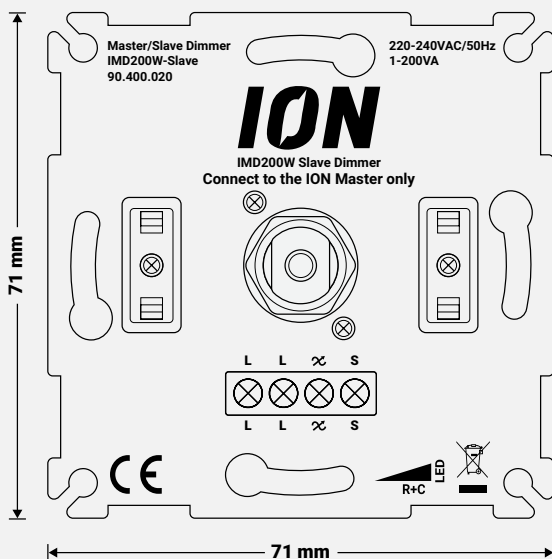




Slave LED Dimmer

Product Code: 90.400.020

- Dimming range 0,3 – 200 Watt
- Min/Max brightness adjustable
- Boost function to create slow start
- To use in two-way and intermediate circuits
- No neutral wire required
- Memory function





LED Cable Dimmer White 75 Watt

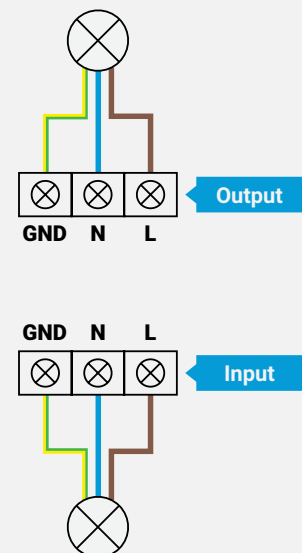
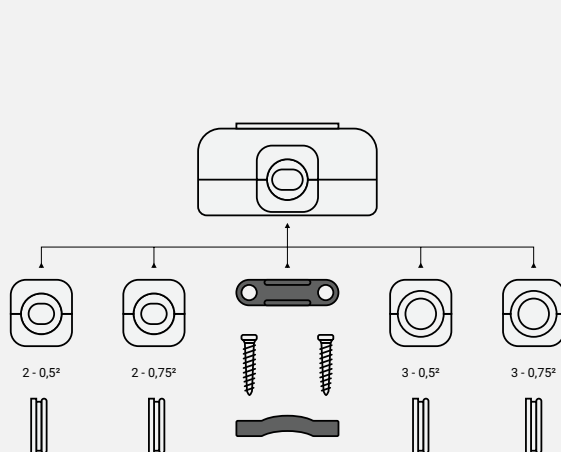
Product Code: 90.300.030

- Dimming range 0,3 – 75 Watt
- Min/Max brightness adjustable
- Dimming speed adjustable
- Push button operation
- Can be used with several types of cable (0.5 to 1.5 mm²)

LED Cable Dimmer Black 75 Watt

Product Code: 90.300.031

- Dimming range 0,3 – 75 Watt
- Min/Max brightness adjustable
- Dimming speed adjustable
- Push button operation
- Can be used with several types of cable (0.5 to 1.5 mm²)





LED Floor Dimmer White 75 Watt

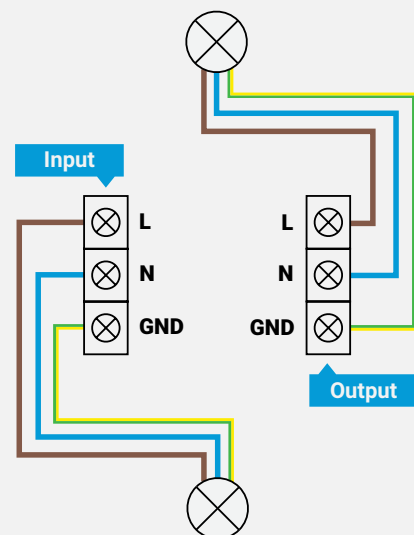
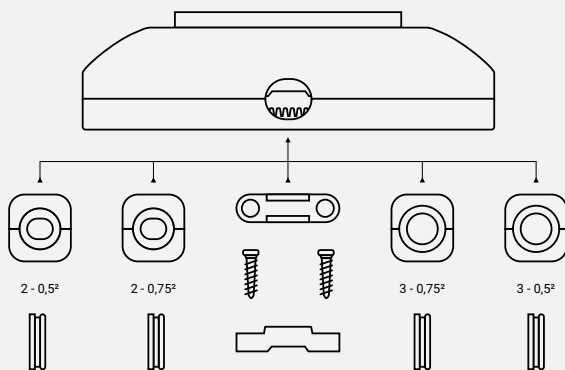
Product Code: 90.300.040

- Dimming range 0,3 – 75 Watt
- Min/Max brightness adjustable
- Speed adjustable
- Push button operation
- Can be used with several types of cable (0.5 to 1.5 mm²)

LED Floor Dimmer Black 75 Watt

Product Code: 90.300.041

- Dimming range 0,3 – 75 Watt
- Min/Max brightness adjustable
- Speed adjustable
- Push button operation
- Can be used with several types of cable (0.5 to 1.5 mm²)

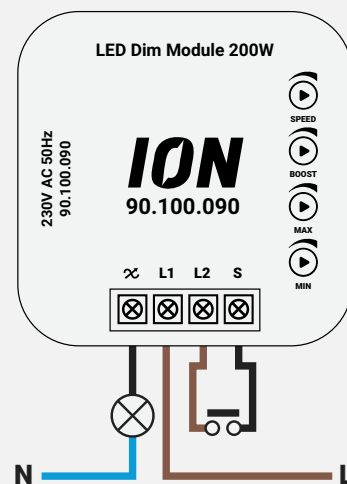
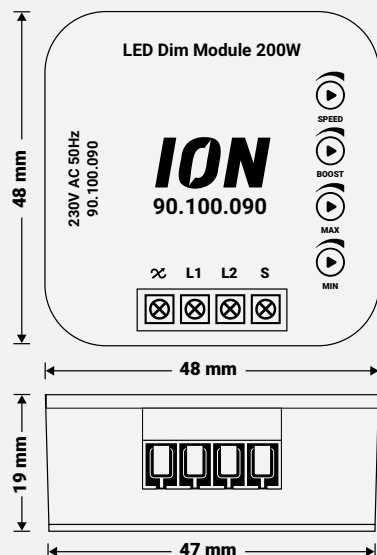




LED Dim Module 200 Watt

Product Code: 90.100.090

- Dimming range 0,3 – 200 Watt
- Compatible with all pulse switches
- Possibility to switch one or more lights simultaneously
- To be placed near the lamp or in the wall
- No neutral wire required, only phase and switch wire

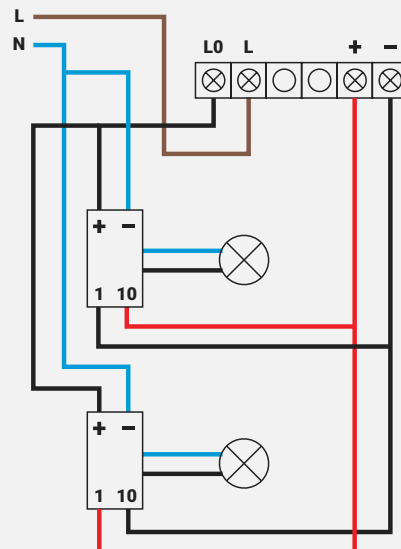
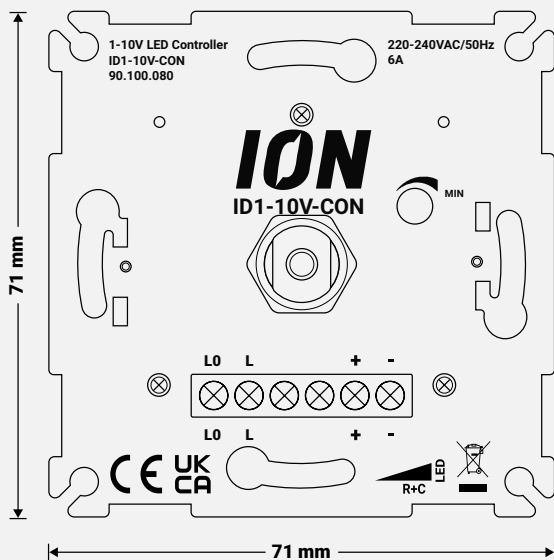


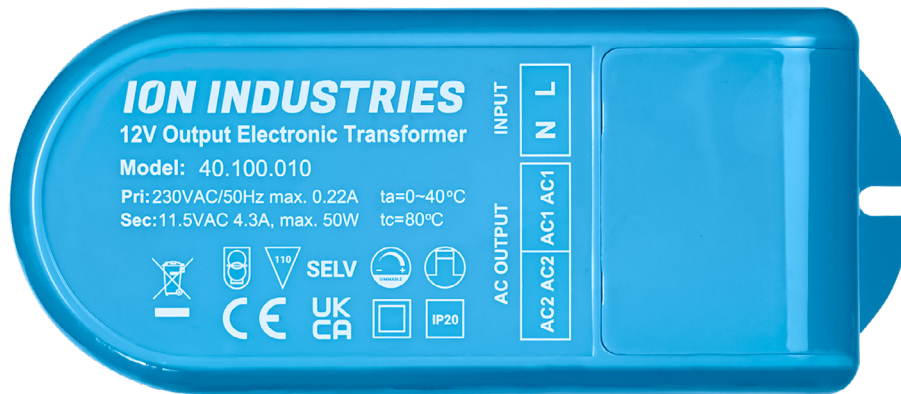


LED Controller 1-10 Volt

Product Code: 90.100.080

- 1-10V for dimming dimmable LED Drivers
- Very suitable for a wide dimming range
- Easy installation
- Memory function

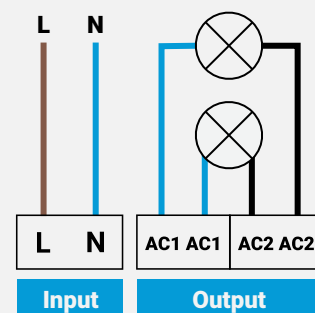
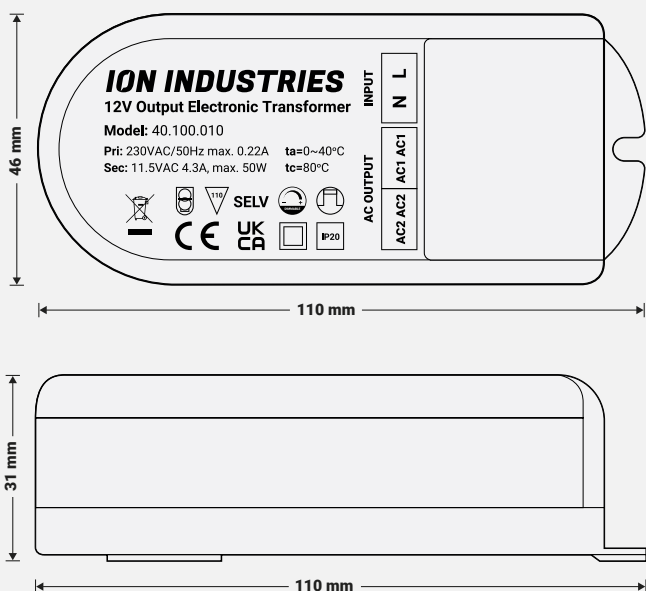




12 Volt LED Driver 50 Watt Dimmable

Product Code: 40.100.010

- Input 220-240V
- Output voltage 12V AC
- Control of 2 separate circuits (jointly switchable)
- Dim/use with all 12V AC LED lights
- Maximum power 50 Watt
- 50,000 burning hours
- PF>95



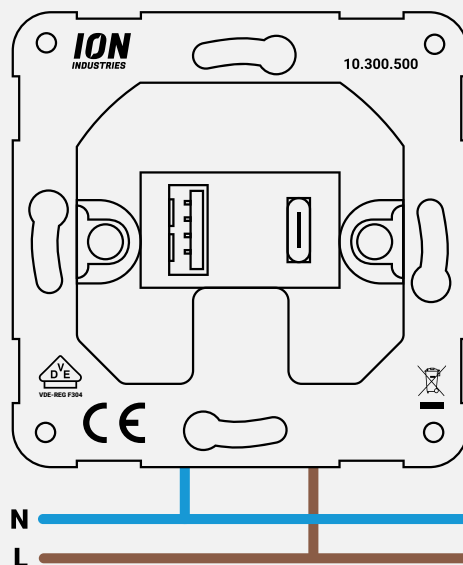


Available soon

Wall socket Charger USB A + USB C

Product Code: 10.300.500

- Two different USB ports
- Charging without adapter
- Compatible with central plates of each series
- Easy installation





SWITCHES

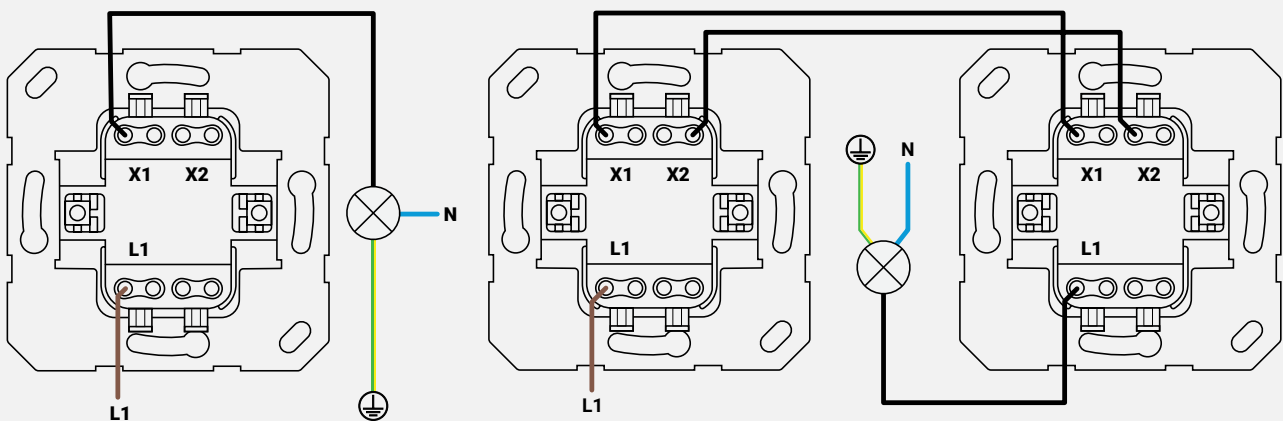
A wide selection of switches! Two-way and Two-gang, with or without pulse and compatible with controls in Alpine White, Matt Alpine White and Matt Black. Easily switch your lights on/off with switches from ION INDUSTRIES!



Two-way Switch

Product Code: 10.300.010

- Two-way circuit
- Compatible with two-way and intermediate circuits
- Wire fastening via plug-in terminal

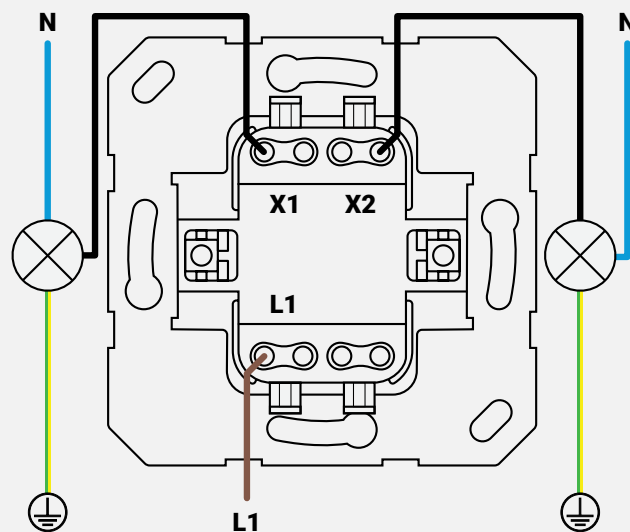




Two-gang Switch

Product Code: 10.300.020

- Two-gang circuit
- Compatible with two-way and intermediate circuits
- Wire fastening via plug-in terminal

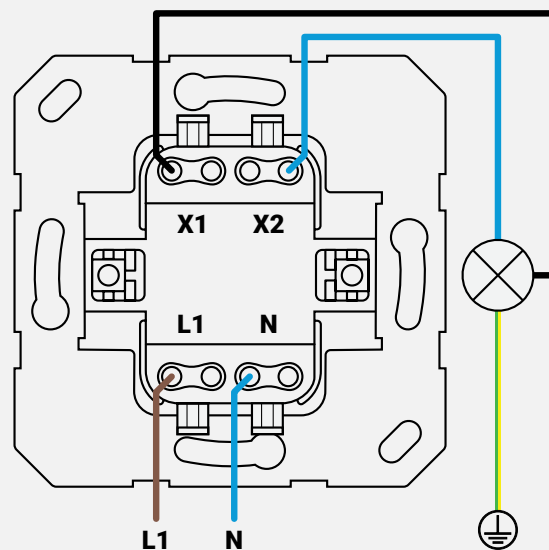




Circuit breaker, 2-pole

Product Code: 10.300.030

- Two-way circuit
- Not compatible with two-way and intermediate circuits
- Wire fastening via plug-in terminal

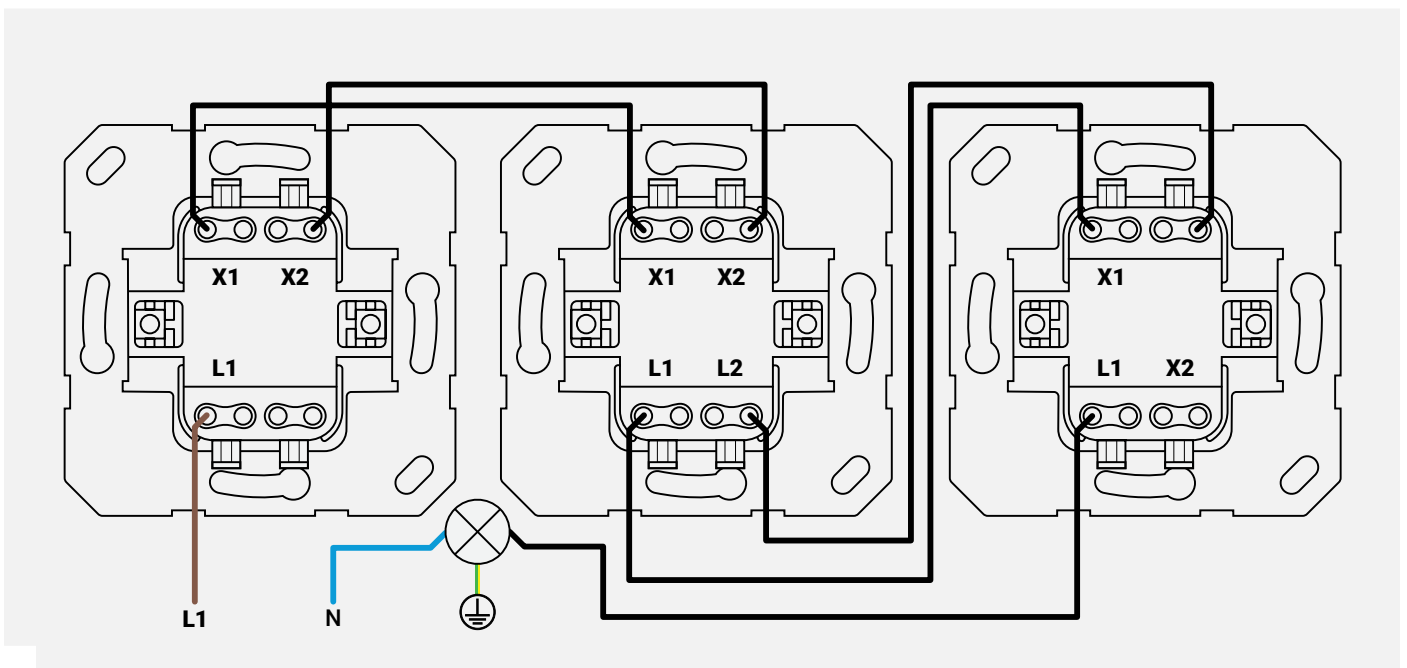




Intermediate switch

Product Code: 10.300.040

- Intermediate circuit
- Compatible with two-way and intermediate circuits
- Wire fastening via plug-in terminal

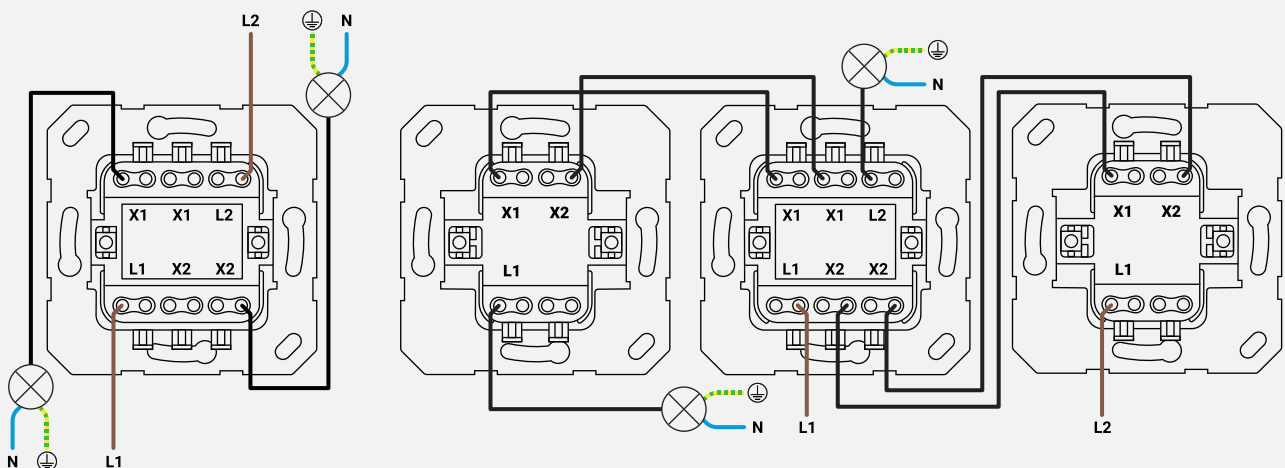




Two-way switch, two-gang

Product Code: 10.300.050

- Compatible with two-way and intermediate circuits
- Wire fastening via plug-in terminal

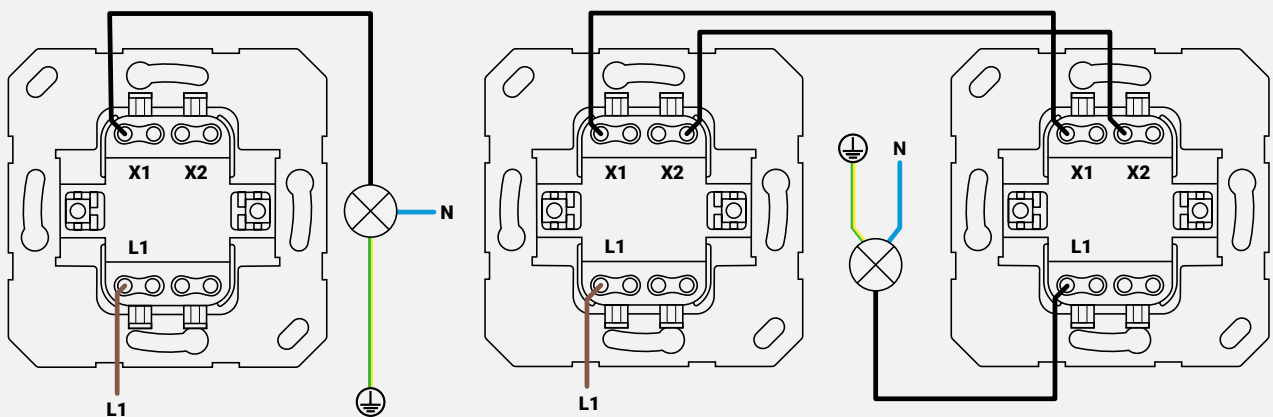




Rocker button, no contact, 1-pole

Product Code: 10.300.070

- Pulse pressure switching
- Compatible with two-way and intermediate circuits
- Wire fastening via plug-in terminal
- Reverting

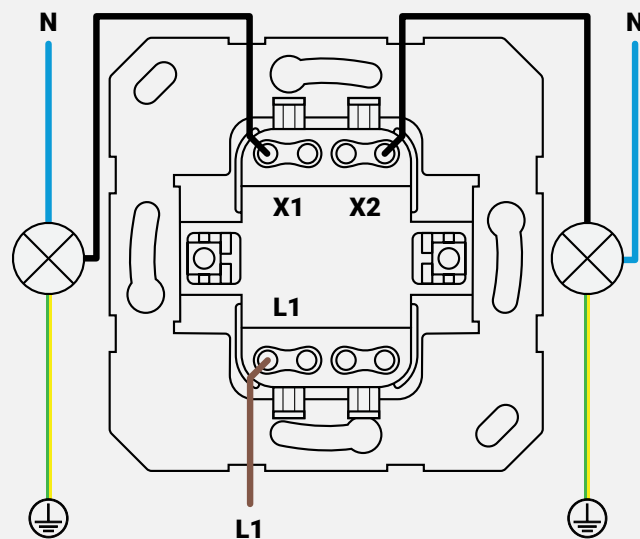




Rocker button, no contact, two-gang, 1-pole

Product Code: 10.300.060

- Pulse pressure switching
- Not compatible with two-way and intermediate circuits
- Wire fastening via plug-in terminal
- Reverting



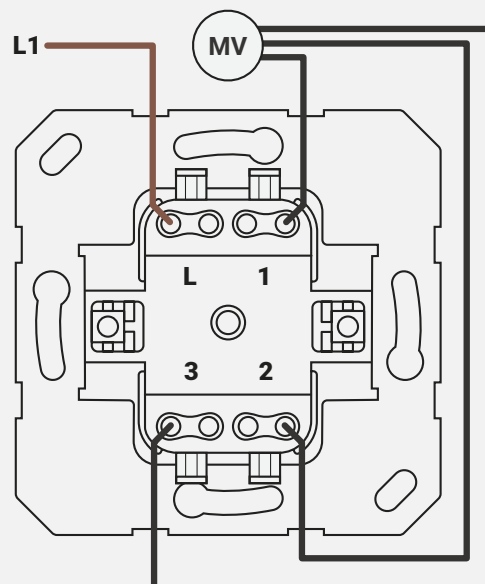


Available soon

Three-stage switch insert with Zero setting

Product Code: 11.300.010

- Rotary switch with zero setting
- Wire fastening via plug-in terminal

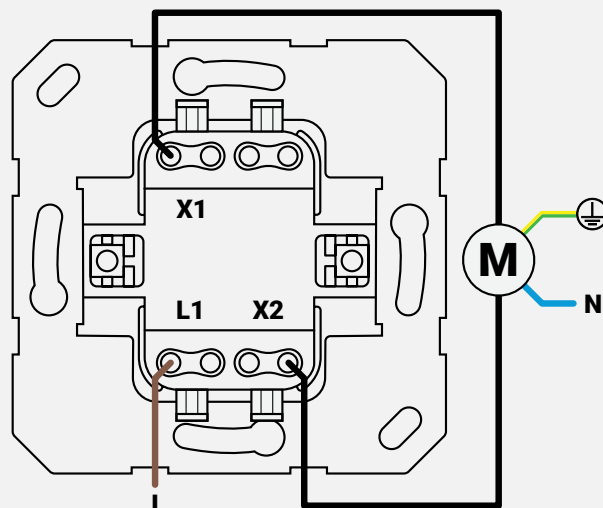




Blind rocker

Product Code: 10.300.080

- Wire fastening via plug-in terminal
- Reverting

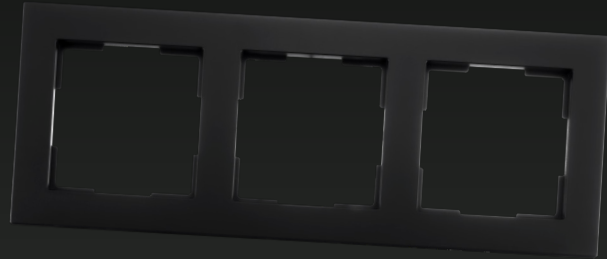




V1

SERIES

ALPINE
WHITE



The frames in the **V1 Series** are sleek and clean.
All products from the V1 and J1 Series fit this type of frame.

J1

SERIES

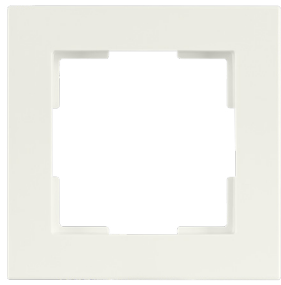
ALPINE
WHITE



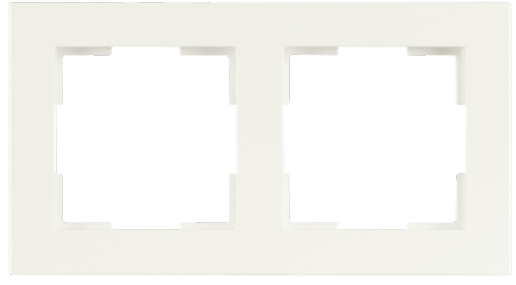
The frames in the **J1 Series** are timeless.
All products from the V1 and J1 Series fit in this type of frame.



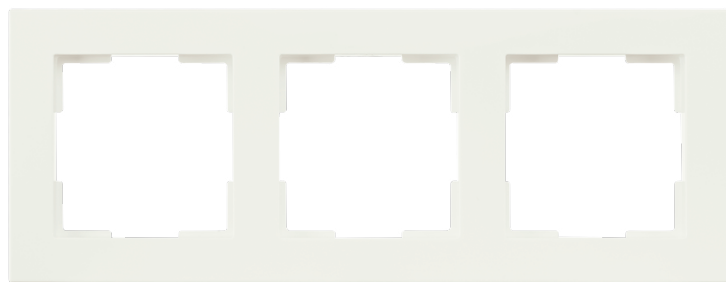
V1, J1 Series | Alpine White



V1 - Cover frame 1-gang
Product Code: 80.300.114



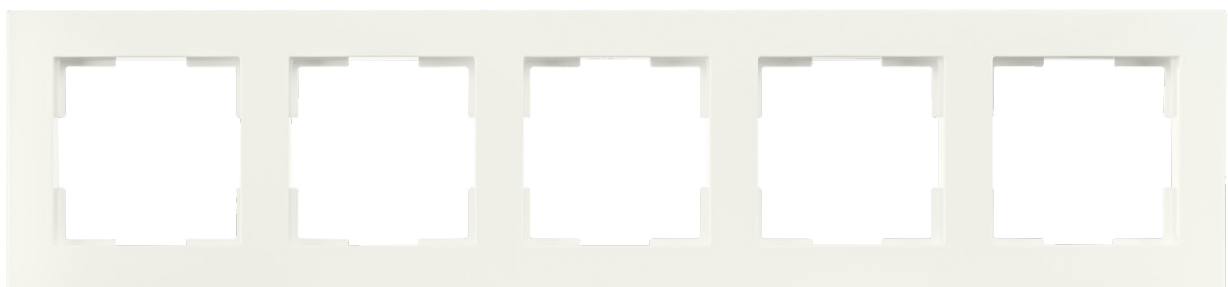
V1 - Cover frame 2-gang
Product Code: 80.300.214



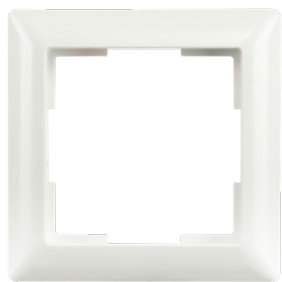
V1 - Cover frame 3-gang
Product Code: 80.300.314



V1 - Cover frame 4-gang
Product Code: 80.300.414



V1 - Cover frame 5-gang
Product Code: 80.300.514



J1 - Cover frame 1-gang
Product Code: 80.301.114



J1 - Cover frame 2-gang
Product Code: 80.301.214



J1 - Cover frame 3-gang
Product Code: 80.301.314



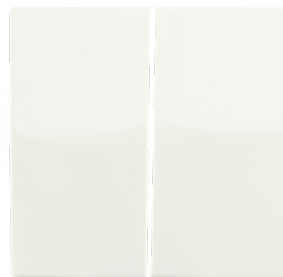
J1 - Cover frame 4-gang
Product Code: 80.301.414



J1 - Cover frame 5-gang
Product Code: 80.301.514



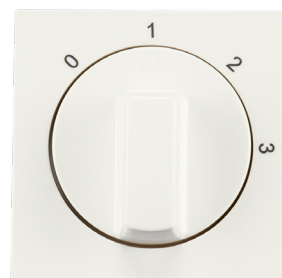
Rocker Two-way switch
Product Code: 20.300.014



Rocker Two-gang switch
Product Code: 20.300.114



Blind Rocker cover
Product Code: 20.300.214



Available soon

Central plate with rotary knob Three-stage switch insert with Zero setting
Product Code: 11.300.114



Central plate Dimmer Button Single
Product Code: 20.300.314



Central plate Dimmer Button Duo
Product Code: 20.300.414



Touch Dimmer Button Single
Product Code: 80.300.084



Touch Dimmer Button Duo
Product Code: 80.300.184



Wall socket
Product Code: 10.100.011

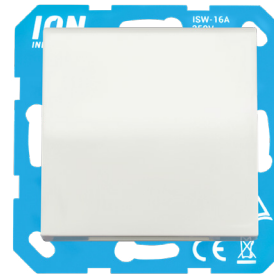


Wall socket with touch protection
Product Code: 10.300.214



Available soon

Wall socket with hinged cover IP44
Product Code: 10.300.314

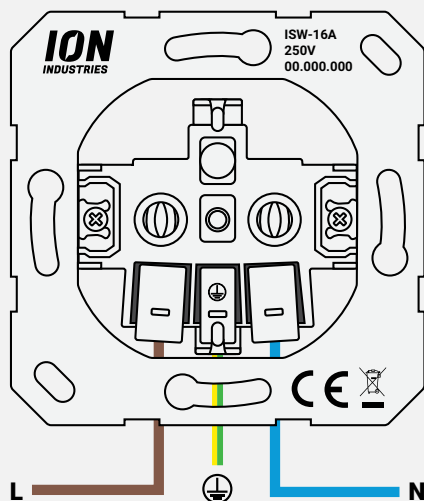


Available soon

Wall socket with hinged cover IP44 and touch protection
Product Code: 10.300.814

Wiring diagram Wall socket

For all 5 socket outlets



Available soon

Wall socket USB A + USB C with touch protection
Product Code: 10.300.414

- Touch protection
- Minimum wattage: 0 W
- Maximum wattage: 3680 W
- Dimensions: 71x71x32 mm
- Mounting: Plug-in clip
- Wall mounting: Claw/screw
- Enclosure class: IP20
- TUV: Yes



Available soon

Central plate Charger USB A + USB C

Product Code: 20.300.514



Blind plate

Product Code: 21.300.014



Available soon

Modular Jack 2-gang with Central plate

Product Code: 13.300.014



Available soon

Modular Jack 30° 2-gang with Central plate

Product Code: 13.300.114





V1 SERIES

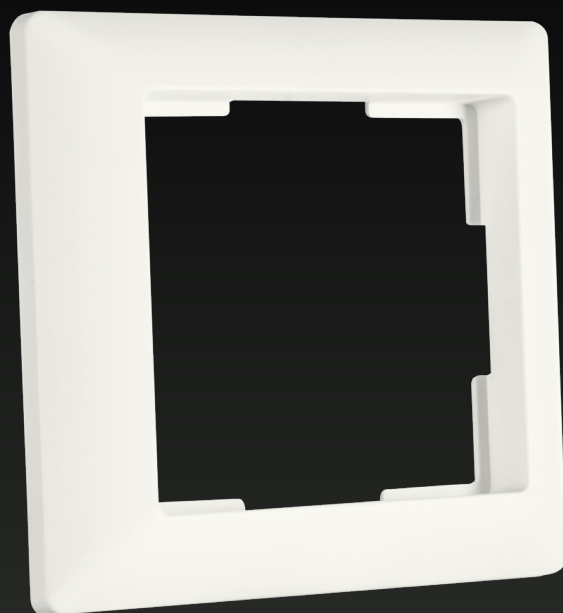
MATT
ALPINE
WHITE



The frames in the **V1 Series** are sleek and clean.
All products from the V1 and J1 Series fit this type of frame.

J1 SERIES

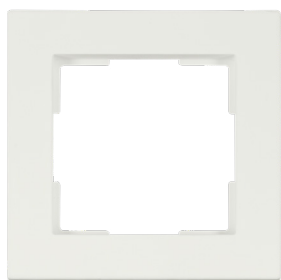
MATT
ALPINE
WHITE



The frames in the **J1 Series** are timeless.
All products from the V1 and J1 Series fit in this type of frame.



V1, J1 Series | Matt Alpine White



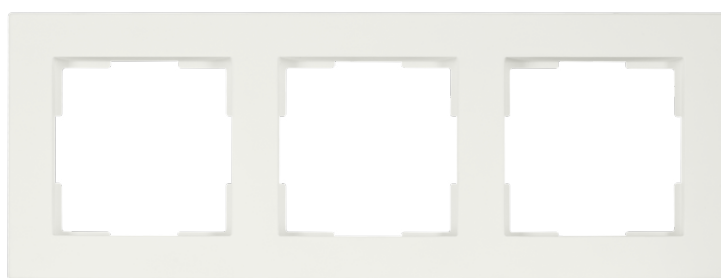
Available soon

V1 - Cover frame 1-gang
Product Code: 80.300.115



Available soon

V1 - Cover frame 2-gang
Product Code: 80.300.215



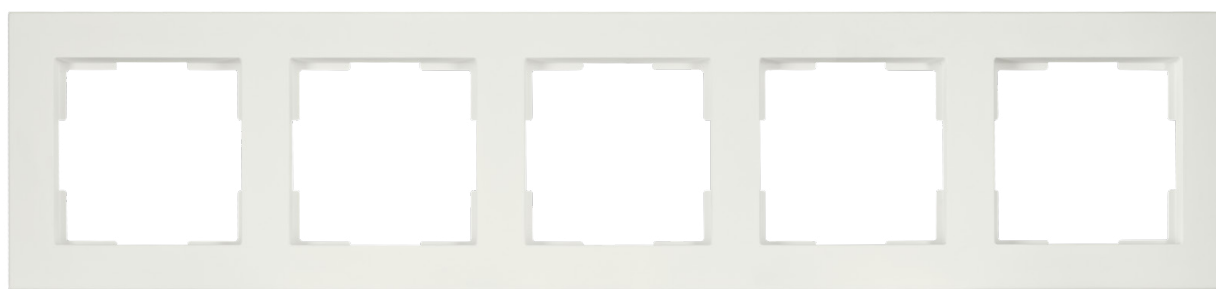
Available soon

V1 - Cover frame 3-gang
Product Code: 80.300.315



Available soon

V1 - Cover frame 4-gang
Product Code: 80.300.415



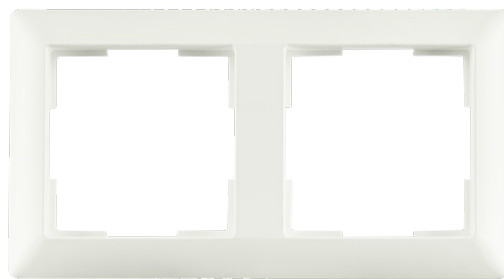
Available soon

V1 - Cover frame 5-gang
Product Code: 80.300.515



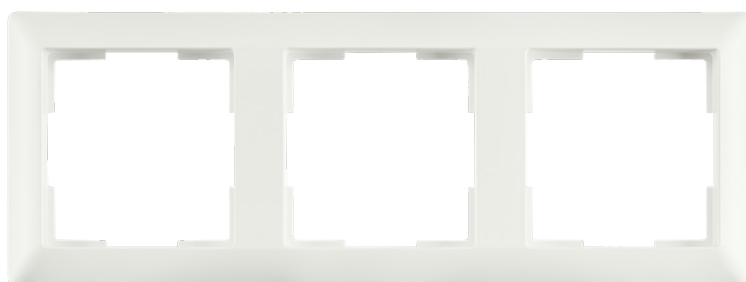
Available soon

J1 - Cover frame 1-gang
Product Code: 80.301.115



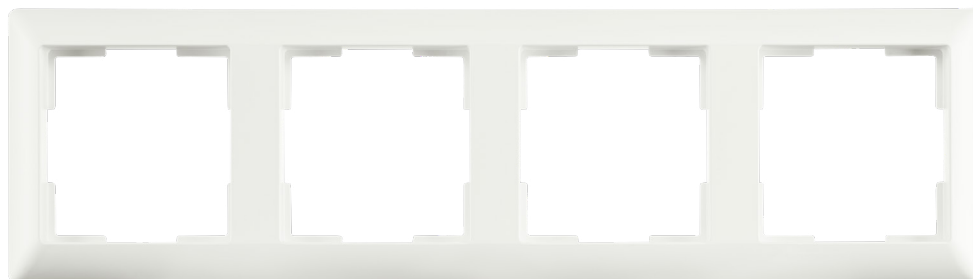
Available soon

J1 - Cover frame 2-gang
Product Code: 80.301.215



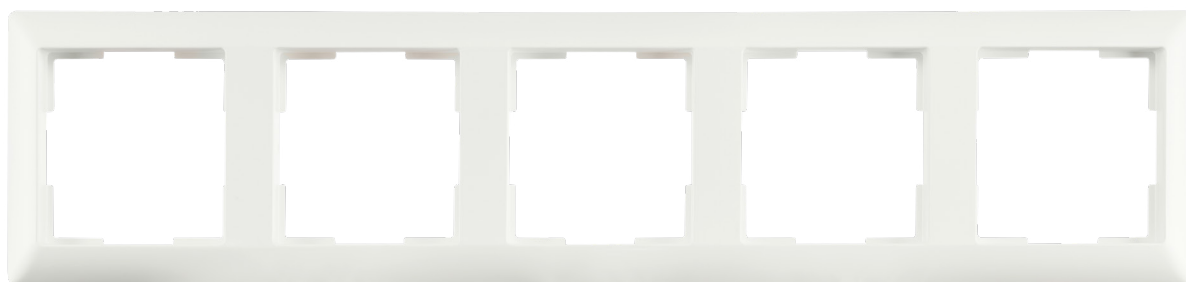
Available soon

J1 - Cover frame 3-gang
Product Code: 80.301.315



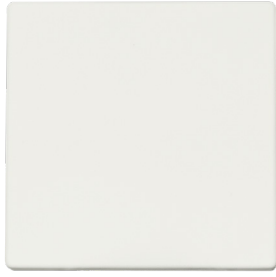
Available soon

J1 - Cover frame 4-gang
Product Code: 80.301.415



Available soon

J1 - Cover frame 5-gang
Product Code: 80.301.515



Available soon

Rocker Two-way switch
Product Code: 20.300.015



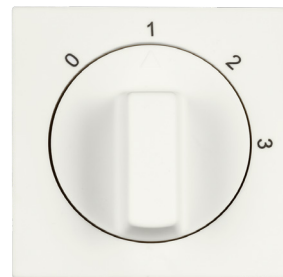
Available soon

Rocker Two-gang switch
Product Code: 20.300.115



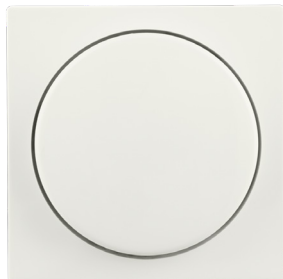
Available soon

Blind rocker cover
Product Code: 20.300.215



Available soon

Central plate with rotary knob Three-stage switch insert with Zero setting
Product Code: 11.300.115



Available soon

Central plate Dimmer Button Single
Product Code: 20.300.315



Available soon

Central plate Dimmer Button Duo
Product Code: 20.300.415



Available soon

Touch Dimmer Button Single
Product Code: 80.300.085



Available soon

Touch Dimmer Button Duo
Product Code: 80.300.185



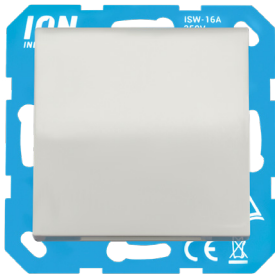
Available soon

Wall socket
Product Code: 10.100.015



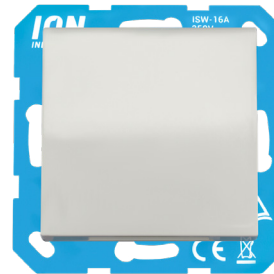
Available soon

Wall socket with touch protection
Product Code: 10.300.215



Available soon

Wall socket with hinged cover IP44
Product Code: 10.300.315

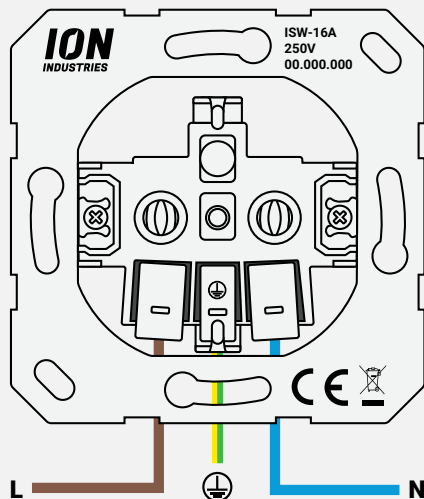


Available soon

Wall socket with hinged cover IP44 and touch protection
Product Code: 10.300.815

Wiring diagram Wall socket

For all 5 socket outlets



Available soon

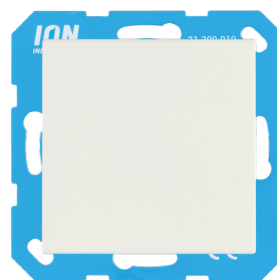
Wall socket USB A + USB C with touch protection
Product Code: 10.300.415

- Touch protection
- Minimum wattage: 0 W
- Maximum wattage: 3680 W
- Dimensions: 71x71x32 mm
- Mounting: Plug-in clip
- Wall mounting: Claw/screw
- Enclosure class: IP20
- TUV: Yes



Available soon

Central plate Charger USB A + USB C
Product Code: 20.300.515



Available soon

Blind plate
Product Code: 21.300.015



Available soon

Modular Jack 2-gang with Central plate
Product Code: 13.300.015



Available soon

Modular Jack 30° 2-gang with Central plate
Product Code: 13.300.115





V1

SERIES

MATT
BLACK



The frames in the **V1 Series** are sleek and clean.
All products from the V1 and J1 Series fit this type of frame.

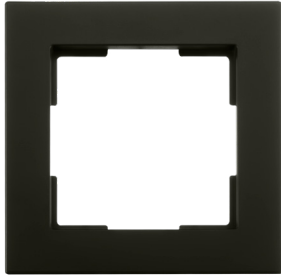
J1

SERIES

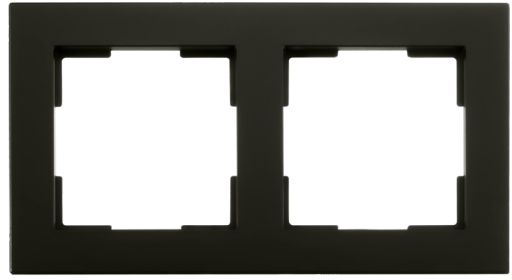
MATT
BLACK



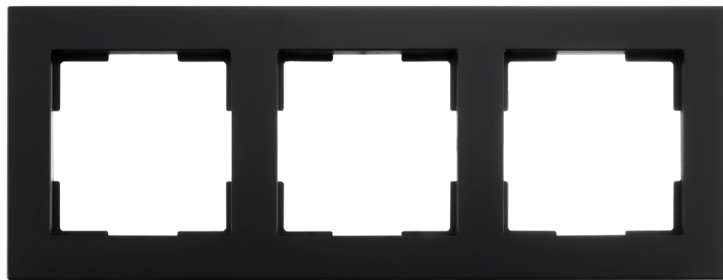
The frames in the **J1 Series** are timeless.
All products from the V1 and J1 Series fit in this type of frame.



V1 - Cover frame 1-gang
Product Code: 80.300.120



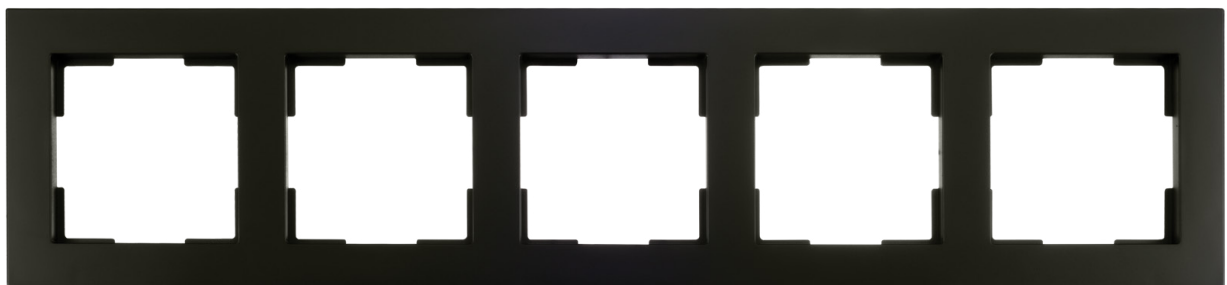
V1 - Cover frame 2-gang
Product Code: 80.300.020



V1 - Cover frame 3-gang
Product Code: 80.300.316



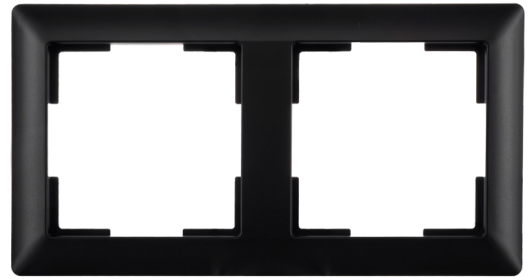
V1 - Cover frame 4-gang
Product Code: 80.300.416



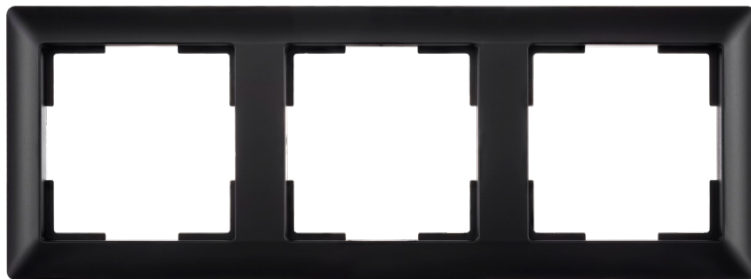
V1 - Cover frame 5-gang
Product Code: 80.300.516



J1 - Cover frame 1-gang
Product Code: 80.301.116



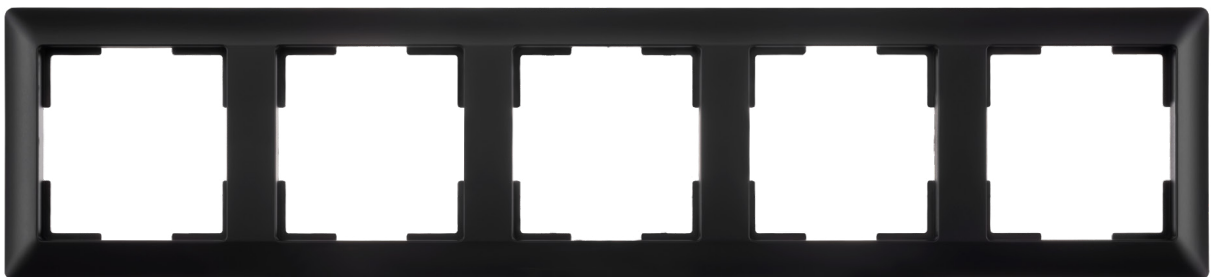
J1 - Cover frame 2-gang
Product Code: 80.301.216



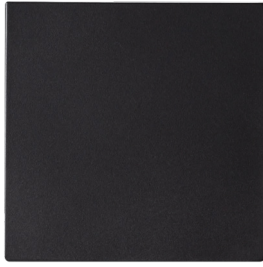
J1 - Cover frame 3-gang
Product Code: 80.301.316



J1 - Cover frame 4-gang
Product Code: 80.301.416



J1 - Cover frame 5-gang
Product Code: 80.301.516



Rocker Two-way switch
Product Code: 20.300.016



Rocker Two-gang switch
Product Code: 20.300.116



Blind rocker cover
Product Code: 20.300.216



Available soon

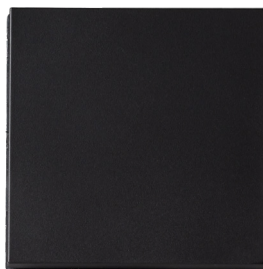
**Central plate with rotary knob Three-stage
switch insert with Zero setting**
Product Code: 11.300.116



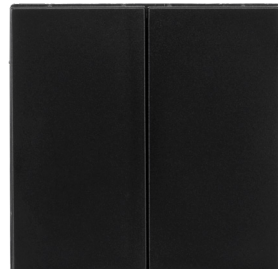
Central plate Dimmer Button Single
Product Code: 20.300.316



Central plate Dimmer Button Duo
Product Code: 20.300.416



Touch Dimmer Button Single
Product Code: 80.300.090



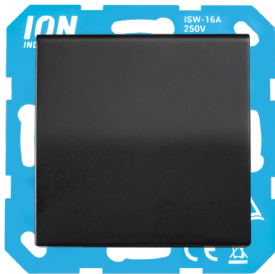
Touch Dimmer Button Duo
Product Code: 80.300.190



Wall socket
Product Code: 10.100.020

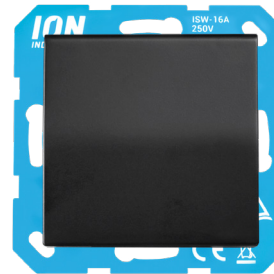


Wall socket with touch protection
Product Code: 10.300.216



Available soon

Wall socket with hinged cover IP44
Product Code: 10.300.316

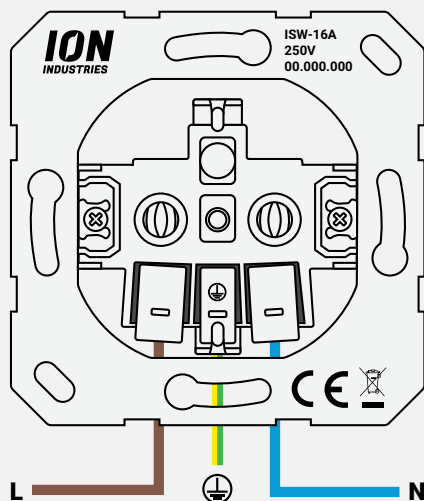


Available soon

Wall socket with hinged cover IP44 and touch protection
Product Code: 10.300.816

Wiring diagram Wall socket

For all 5 socket outlets



Available soon

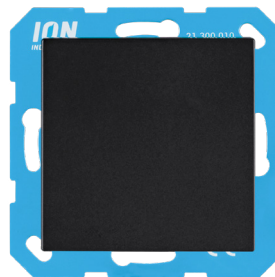
Wall socket USB A + USB C with touch protection
Product Code: 10.300.416

- Touch protection
- Minimum wattage: 0 W
- Maximum wattage: 3680 W
- Dimensions: 71x71x32 mm
- Mounting: Plug-in clip
- Wall mounting: Claw/screw
- Enclosure class: IP20
- TUV: Yes



Available soon

Central plate Charger USB A + USB C
Product Code: 20.300.516



Blind plate
Product Code: 21.300.016



Available soon

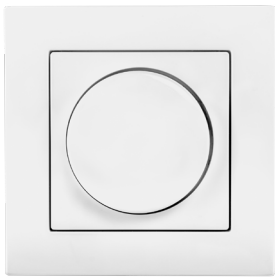
Modular Jack 2-gang with Central plate
Product Code: 13.300.016



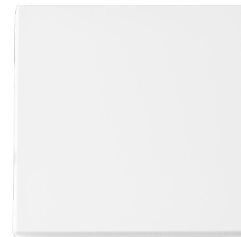
Available soon

Modular Jack 30° 2-gang with Central plate
Product Code: 13.300.116

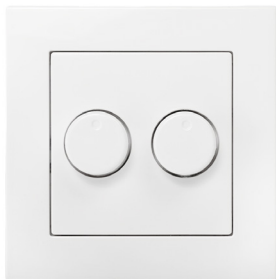




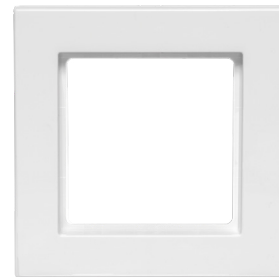
Cover plate Single White
Product Code: 80.100.010



Touch Dimmer Button White
Product Code: 80.300.080



Cover plate LED Duo Dimmer White
Product Code: 80.200.010



Cover frame Single White
Product Code: 80.300.110



Cover frame 2-gang White
Product Code: 80.300.010

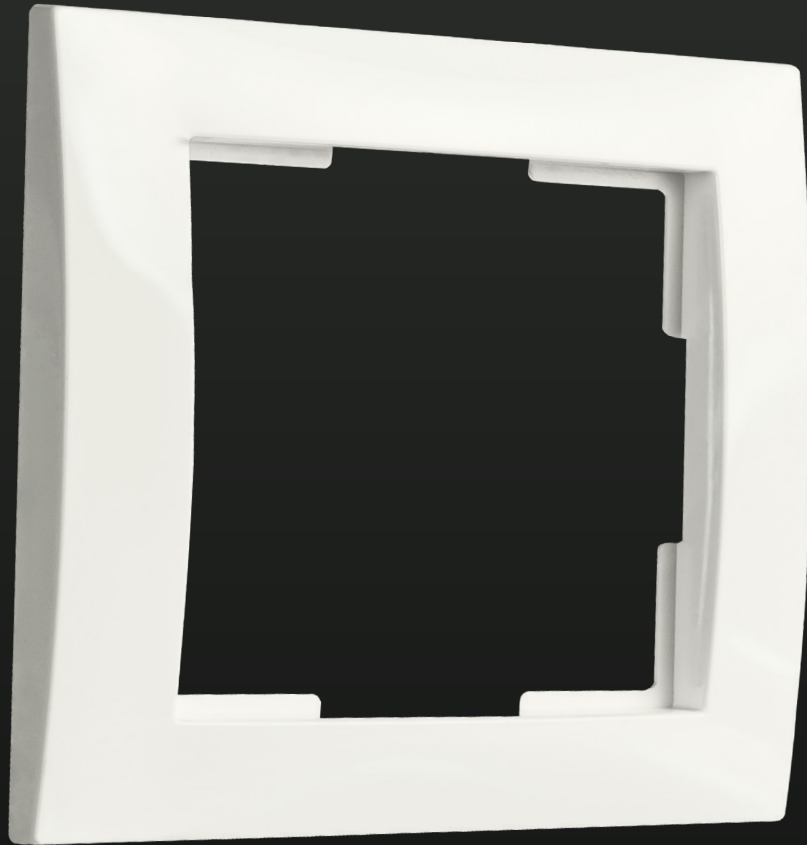




E1

SERIES

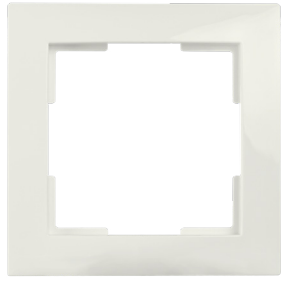
ALPINE
WHITE



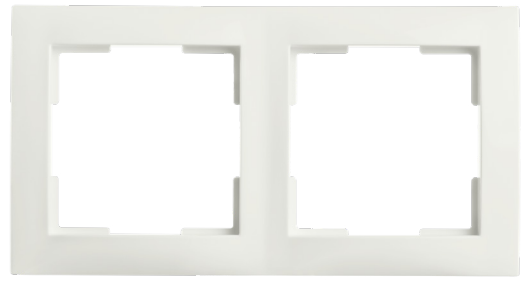
The frames in the [E1 Series](#) are modern.
All products from the E1 Series fit this in type of frame.



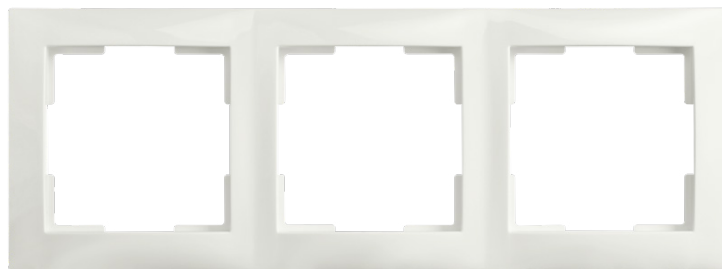
E1 Series | Alpine White



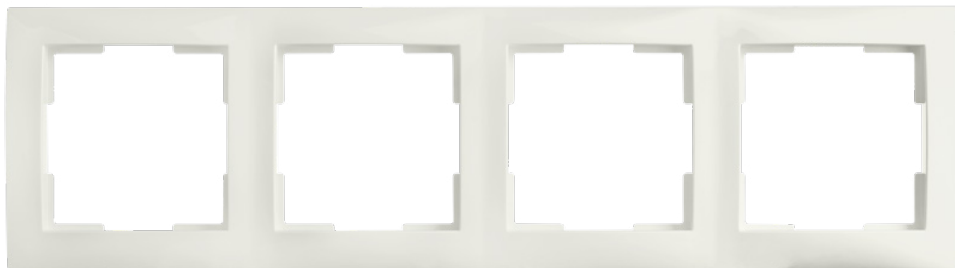
E1 - Cover frame 1-gang
Product Code: 80.302.114



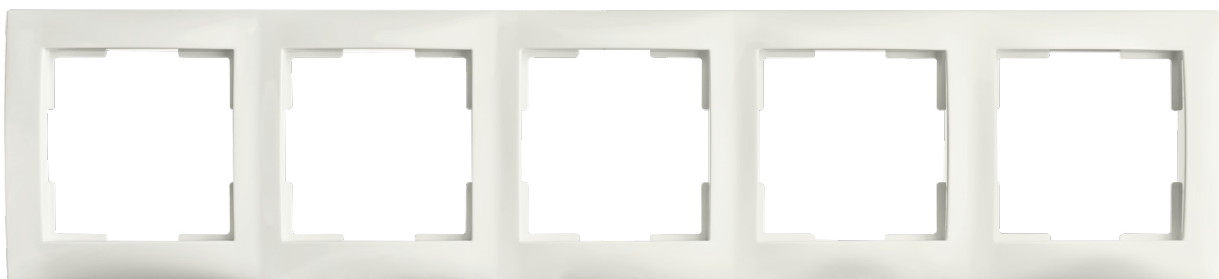
E1 - Cover frame 2-gang
Product Code: 80.302.214



E1 - Cover frame 3-gang
Product Code: 80.302.314



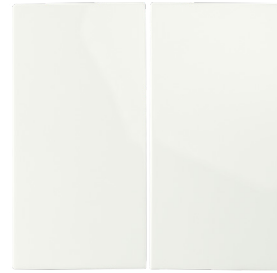
E1 - Cover frame 4-gang
Product Code: 80.302.414



E1 - Cover frame 5-gang
Product Code: 80.302.514



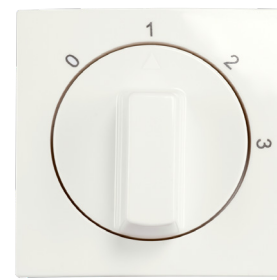
Rocker Two-way switch
Product Code: 20.302.014



Rocker Two-gang switch
Product Code: 20.302.114



Blind rocker cover
Product Code: 20.302.214



Available soon

**Central plate with rotary knob Three-stage
switch insert with Zero setting**
Product Code: 11.302.114



Available soon

Central plate Dimmer Button Single
Product Code: 20.302.314



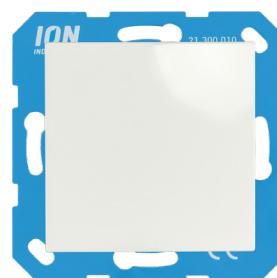
Available soon

Central plate Dimmer Button Duo
Product Code: 20.302.414



Available soon

Central plate Charger USB A + USB C
Product Code: 20.302.514



Blind plate
Product Code: 21.302.014



Wall socket
Product Code: 10.302.014

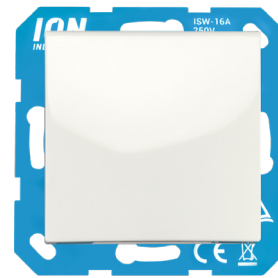


Wall socket with touch protection
Product Code: 10.302.214



Available soon

Wall socket with hinged cover IP44
Product Code: 10.302.314



Available soon

**Wall socket with hinged cover IP44
and touch protection**
Product Code: 10.302.814

- Touch protection
- Minimum wattage: 0 W
- Maximum wattage: 3680 W
- Dimensions: 71x71x32 mm



- Mounting: Plug-in clip
- Wall mounting: Claw/screw
- Enclosure class: IP20
- TUV: Yes

Available soon

Wall socket USB A + USB C with touch protection
Product Code: 10.302.414



Available soon

Modular Jack 2-gang with Central plate
Product Code: 13.302.014



Available soon

Modular Jack 30° 2-gang with Central plate
Product Code: 13.302.114



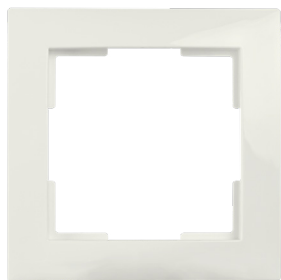
E1

SERIES

MATT
ALPINE
WHITE

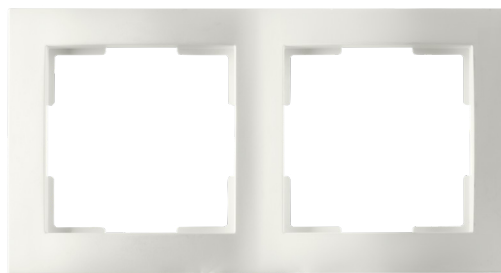


The frames in the [E1 Series](#) are modern.
All products from the E1 Series fit in this type of frame.



Available soon

E1 - Cover frame 1-gang
Product Code: 80.302.115



Available soon

E1 - Cover frame 2-gang
Product Code: 80.302.215



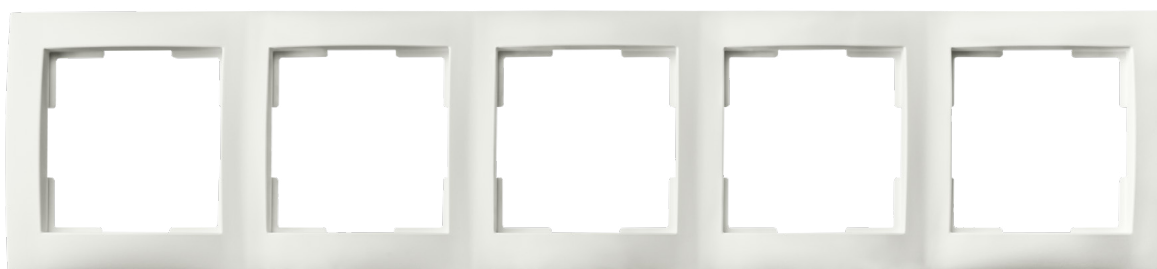
Available soon

E1 - Cover frame 3-gang
Product Code: 80.302.315



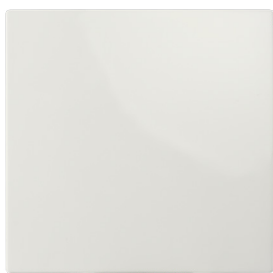
Available soon

E1 - Cover frame 4-gang
Product Code: 80.302.415



Available soon

E1 - Cover frame 5-gang
Product Code: 80.302.515



Available soon

Rocker Two-way switch
Product Code: 20.302.015



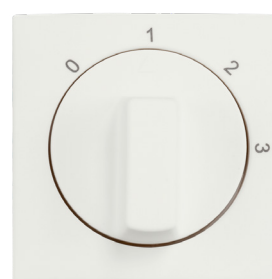
Available soon

Rocker Two-gang switch
Product Code: 20.302.115



Available soon

Blind rocker cover
Product Code: 20.302.215



Available soon

Central plate with rotary knob Three-stage switch insert with Zero setting
Product Code: 11.302.115



Available soon

Central plate Dimmer Button Single
Product Code: 20.302.315



Available soon

Central plate Dimmer Button Duo
Product Code: 20.302.415



Available soon

Central plate Charger USB A + USB C
Product Code: 20.302.515



Available soon

Blind plate
Product Code: 21.302.015



Available soon

Wall socket
Product Code: 10.302.015



Available soon

Wall socket with touch protection
Product Code: 10.302.215



Available soon

Wall socket with hinged cover IP44
Product Code: 10.302.315



Available soon

**Wall socket with hinged cover IP44
and touch protection**
Product Code: 10.302.815

- Touch protection
- Minimum wattage: 0 W
- Maximum wattage: 3680 W
- Dimensions: 71x71x32 mm



- Mounting: Plug-in clip
- Wall mounting: Claw/screw
- Enclosure class: IP20
- TUV: Yes

Available soon

Wall socket USB A + USB C with touch protection
Product Code: 10.302.415



Available soon

Modular Jack 2-gang with Central plate
Product Code: 13.302.015



Available soon

Modular Jack 30° 2-gang with Central plate
Product Code: 13.302.115



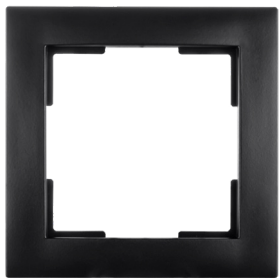
E1

SERIES

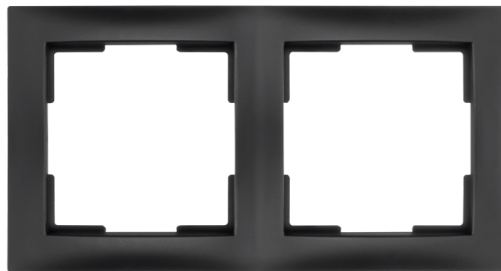
MATT
BLACK



The frames in the [E1 Series](#) are modern.
All products from the E1 Series fit in this type of frame.



E1 - Cover frame 1-gang
Product Code: 80.302.116



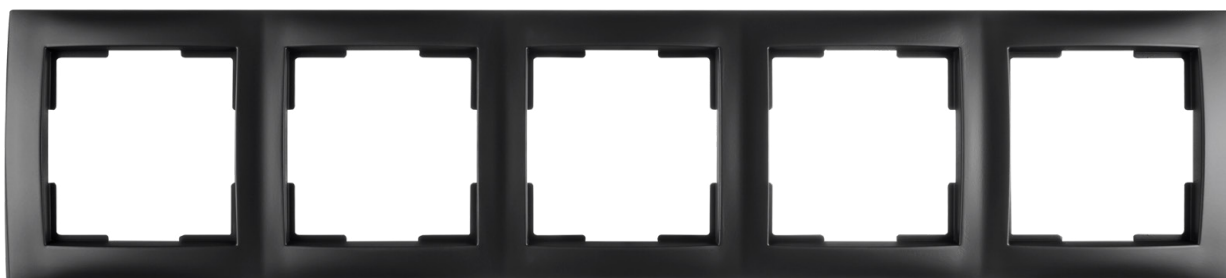
E1 - Cover frame 2-gang
Product Code: 80.302.216



E1 - Cover frame 3-gang
Product Code: 80.302.316



E1 - Cover frame 4-gang
Product Code: 80.302.416



E1 - Cover frame 5-gang
Product Code: 80.302.516



Rocker Two-way switch
Product Code: 20.302.016



Rocker Two-gang switch
Product Code: 20.302.116

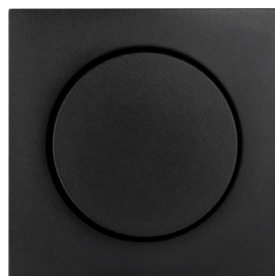


Blind rocker cover
Product Code: 20.302.216



Available soon

Central plate with rotary knob Three-stage switch insert with Zero setting
Product Code: 11.302.116



Available soon

Central plate Dimmer Button Single
Product Code: 20.302.316



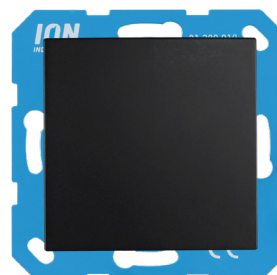
Available soon

Central plate Dimmer Button Duo
Product Code: 20.302.416



Available soon

Central plate Charger USB A + USB C
Product Code: 20.302.516



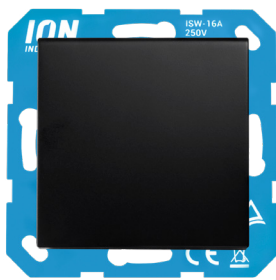
Blind plate
Product Code: 21.302.016



Wall socket
Product Code: 10.302.016

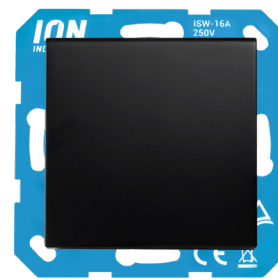


Wall socket with touch protection
Product Code: 10.302.216



Available soon

Wall socket with hinged cover IP44
Product Code: 10.302.316



Available soon

Wall socket with hinged cover IP44 and touch protection
Product Code: 10.302.816

- Touch protection
- Minimum wattage: 0 W
- Maximum wattage: 3680 W
- Dimensions: 71x71x32 mm



- Mounting: Plug-in clip
- Wall mounting: Claw/screw
- Enclosure class: IP20
- TUV: Yes

Available soon

Wall socket USB A + USB C with touch protection
Product Code: 10.302.416



Available soon

Modular Jack 2-gang with Central plate
Product Code: 13.302.016



Available soon

Modular Jack 30° 2-gang with Central plate
Product Code: 13.302.116



Surface-mounted

IP55

The best protecting series: the Surface-mounted IP55! Ideal for use in damp locations, e.g. in the garden or shed. Switches, socket outlets or combinations! Available in Grey and Black.



Available soon

Surface mounted Two-way switch
Product Code: 55.100.010



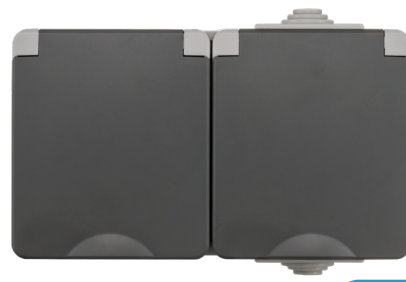
Available soon

Surface mounted Two-gang switch
Product Code: 55.100.030



Available soon

Surface mounted Wall Socket
Product Code: 55.100.070



Available soon

Surface mounted Wall Socket 2-gang
Product Code: 55.100.080



Available soon

**Surface mounted Combination Wall Socket
and Two-way switch**
Product Code: 55.100.090



Available soon

**Surface mounted Combination Wall Socket
and Two-gang switch**
Product Code: 55.100.110



Available soon

Surface mounted Wall Socket 2-gang Vertical
Product Code: 55.100.170



Available soon

Surface mounted Wall Socket 3-gang Vertical
Product Code: 55.100.180



Available soon

Surface mounted Two-way switch
Product Code: 55.200.010



Available soon

Surface mounted Two-gang switch
Product Code: 55.200.030



Available soon

Surface mounted Wall Socket
Product Code: 55.200.070



Available soon

Surface mounted Wall Socket 2-gang
Product Code: 55.200.080



Available soon

Surface mounted Combination Wall Socket and Two-way switch
Product Code: 55.200.090



Available soon

Surface mounted Combination Wall Socket and Two-gang switch
Product Code: 55.200.110



Available soon

Surface mounted Wall Socket 2-gang Vertical
Product Code: 55.200.170



Available soon

Surface mounted Wall Socket 3-gang Vertical
Product Code: 55.200.180





ADDITIONAL

SWITCHING MATERIAL



Additional Switching Material



Available soon

**Wall socket Half-Mounted 2-gang
USB A + USB C Alpin White**
Product Code: 10.300.614



Available soon

**Wall socket Half-Mounted 2-gang
USB A + USB C Matt Black**
Product Code: 10.300.616



Available soon

Wall socket Half-Mounted 2-gang Alpin White
Product Code: 10.300.714



Available soon

Wall socket Half-Mounted 2-gang Matt Black
Product Code: 10.300.716



Connector UTP – Cat6
Product Code: 12.100.009



Available soon

Connector Coax – TV
Product Code: 14.100.009



LED Dimming Stabilizer
Product Code: 99.050.000



Our LED Dimmers are compatible with the following brands:

ION INDUSTRIES

PEHA

GIRA

merten

B.
Berker

 **BUSCH-JAEGER**

Q-LINK®

JUNG

niko

Kopp

ION INDUSTRIES (NL)

Symfonielaan 12,
3438 EV Nieuwegein,
Nederland

info@ionindustries.com
+31 (0)85 – 489 05 25

ION INDUSTRIES (DE)

Waldstraße 30,
55452 Windesheim,
Deutschland

germany@ionindustries.com
+49 (0) 670 76 833 699

